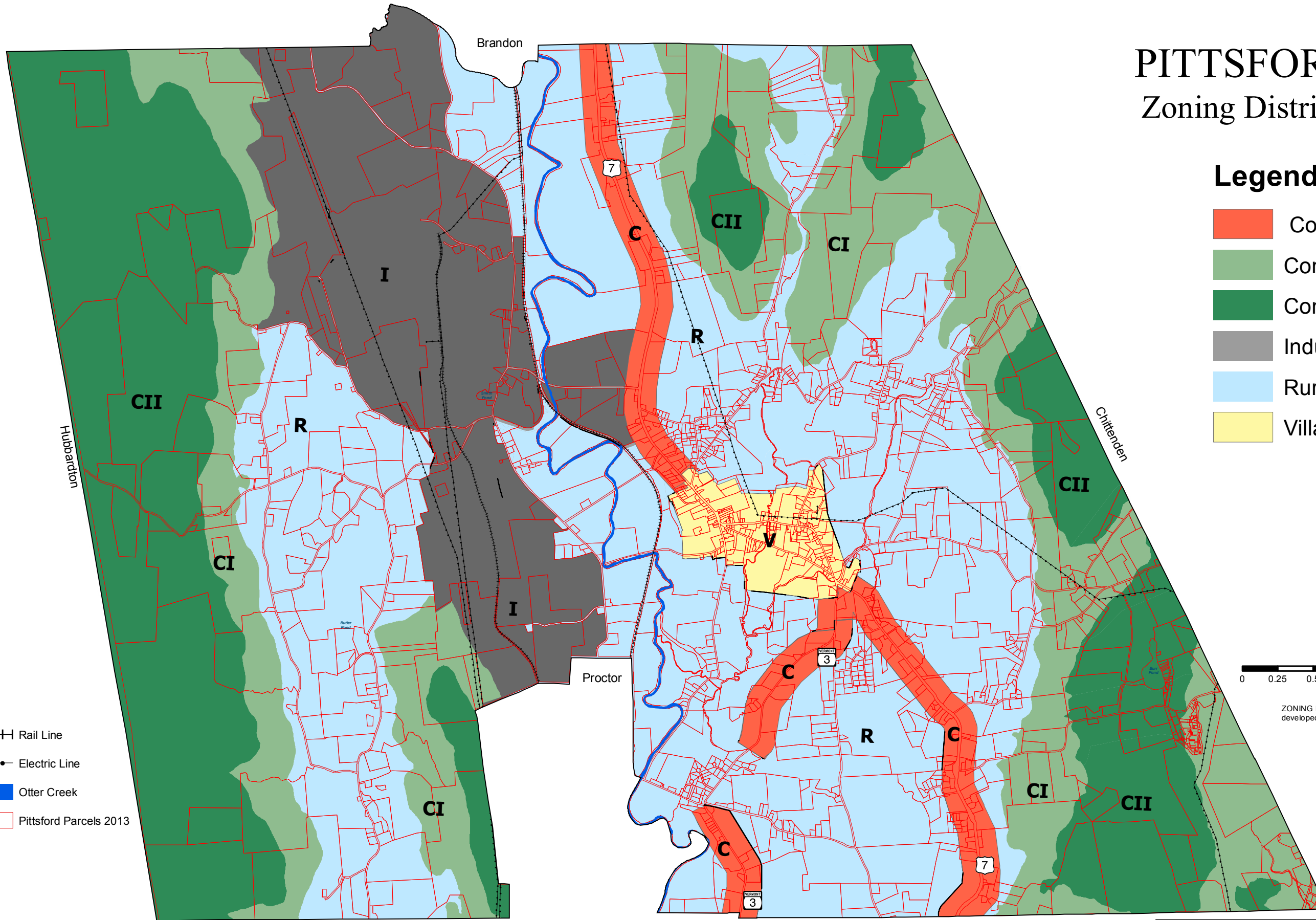


PITTSFORD, VT

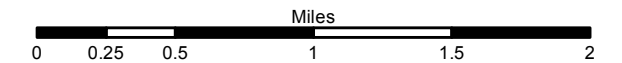
Zoning Districts 2019

Legend

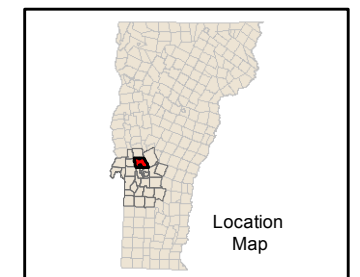
- Commercial
- Conservation I
- Conservation II
- Industrial
- Rural
- Village



- Rail Line
- Electric Line
- Otter Creek
- Pittsford Parcels 2013



ZONING DISTRICTS: are derived from Future Land Use data developed by the Pittsford Planning Commission, 2017.



Date: 5/8/2019



Document Path: E:\RRPC\PITTSFRD\Pittsford Zoning 2019.mxd

The Rutland Regional Planning Commission (RRPC) makes no warranty as to the merchantability or accuracy of this data. This data is believed to be an accurate representation of the information upon which it was derived, but errors and omissions may exist. Site investigations and visits should be conducted prior to making any decisions based on the data portrayed. In no event is the RRPC, its agents or assigns, liable for any losses which may occur as a result of using this data. This information is intended for general planning purposes only. It is not a legal document.

This is the Official Map referenced in the Town of Pittsford Zoning Regulations; approved by the Select Board on March 20, 2019 and Effective on April 11, 2019. This map replaces any previously issued maps.
 On behalf of the Pittsford Planning Commission: _____
 Mark Winslow, Chairman