

Tri-Town Trail Scoping Study

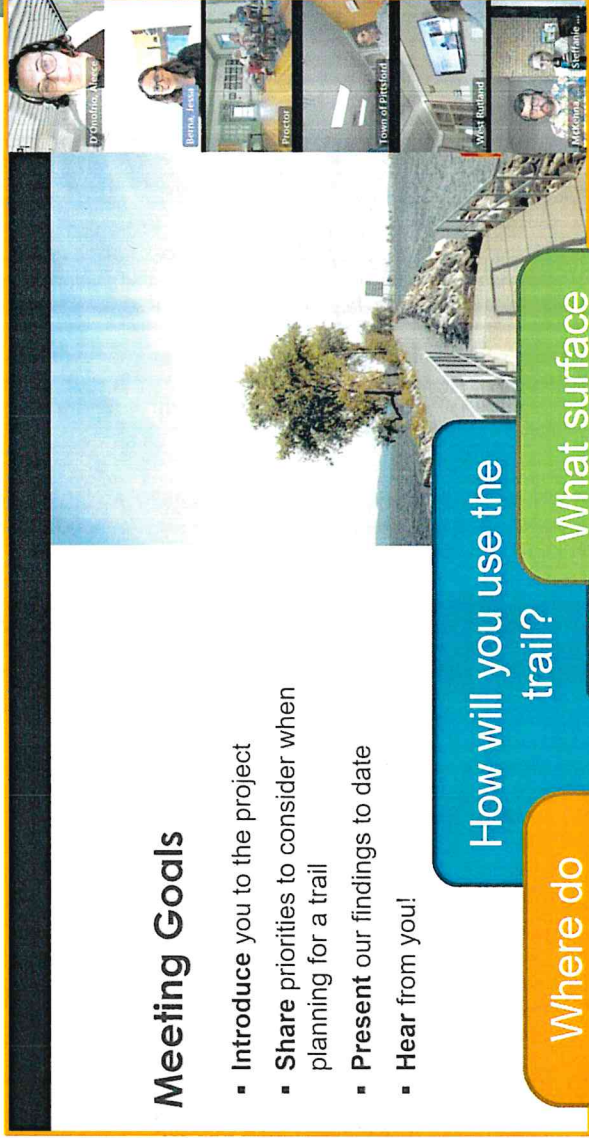
Study Team Meeting #2

August 7, 2024

Agenda

- Local Concerns Meeting and Survey Findings
- Alignment Alternatives
- Next Steps

June 12, 2024: Local Concerns Meeting and Survey Findings



Meeting Goals

- Introduce you to the project
- Share priorities to consider when planning for a trail
- Present our findings to date
- Hear from you!

Where do you want to access the trail?

How will you use the trail?

What surface material do you prefer?

On-road or off-road?

Tri-Town Trail Study Survey

Survey Window Open Until 6/28/24

Participate in the Tri-Town Trails Survey! Proctor, Pittsford, and West Rutland are collaborating on an exciting project: constructing a multi-use path connecting the three towns, to be known as the Tri-Town Trail.

We want to hear from you!

Your input is vital as we work together to make our communities more connected and accessible. **Complete Part 1 - Trail Usage Survey** to share your thoughts on how you will use the trails and **Part 2 - Community Mapping** to help us understand how to best serve our community's needs. Let's create a pathway that enhances the connectivity and vibrancy of our towns. We can't wait to hear your feedback through the survey!

Take Survey

Part 1
Trail Usage Survey

Part 2
Community Mapping

Survey Window
Open Until 6/28/24

SURVEY LINK <https://forms.office.com/r/F2kqk3j17i>

Online Survey: 56 responses

Local Concerns Meeting and Survey Findings (June 12, 2024)

Purpose and Need Word Cloud

Add three words to the cloud that express your visions, hopes, and/or desires for this trail.

Long distance path

Exercise

Convenient

In nature

Recreation

Safe from cars

Place to bike

Running/walking/biking

Relax






FUN

Bring people into town

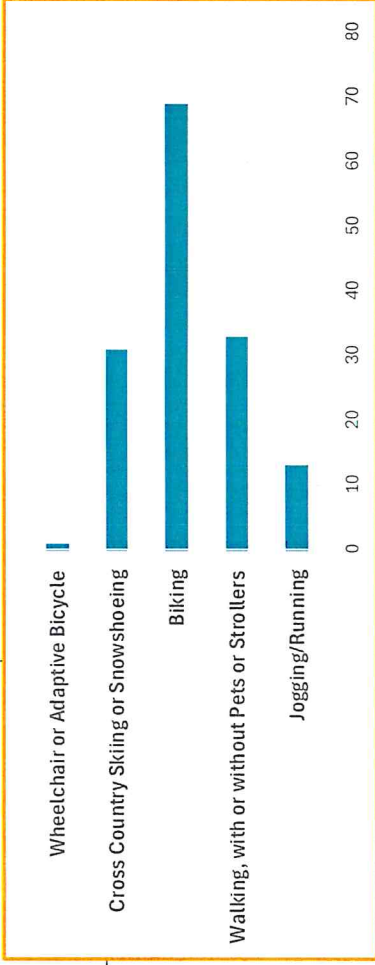


(Online and in person)

Local Concerns Meeting and Survey Findings (June 12, 2024)

<p>How will you use the trail? (Choose 2)</p>	<p>Walking or Walking with Pets/Strollers</p> 	<p>Jogging/Running</p> 
<p>Biking</p> 	<p>Mountain Biking</p> 	<p>Cross Country Skiing or Snowshoeing</p> 

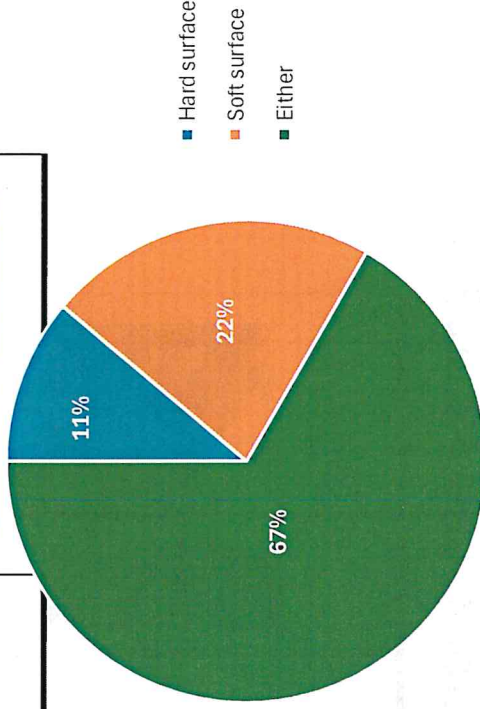
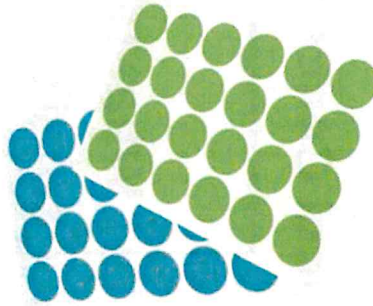
(Online and in person)



Local Concerns Meeting and Survey Findings (June 12, 2024)

<p>What surface material would you prefer for the trail? (Choose 1)</p>	<p>Hard Surface (Hot Mix Asphalt Pavement)</p> 	<p>Both/ Either</p>	<p>Soft Surface (Stonedust)</p> 
--	---	----------------------------	--

(Online and in person)

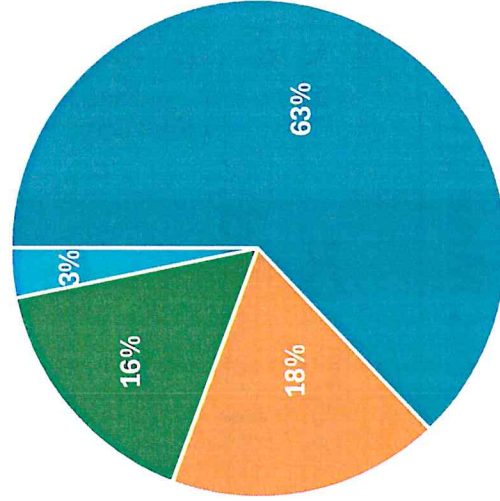


Local Concerns Meeting and Survey Findings (June 12, 2024)

<p>What level of comfort do you seek in the trail? (Choose 1)</p>	<p>Off-Road</p>  <p>3</p>	<p>Both/ Either</p> <p>5</p>	<p>On-Road</p>  <p>1</p>
--	--	--	---

(In person)

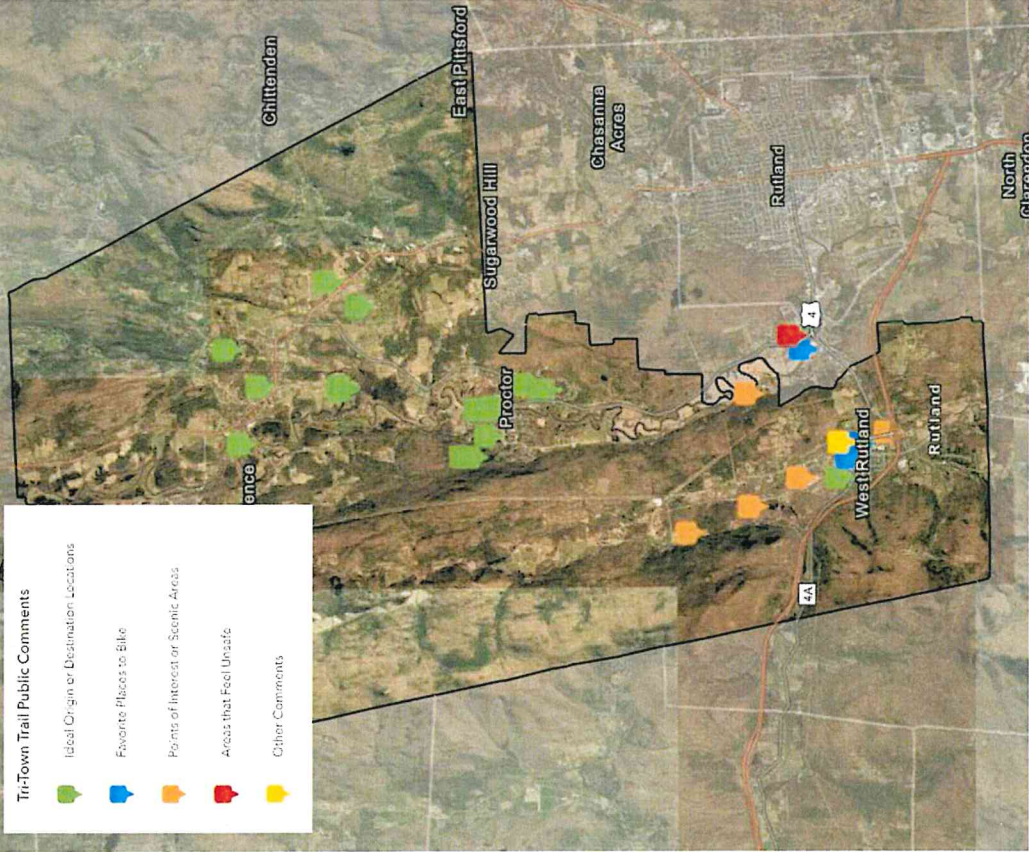
What type of bicyclist are you?



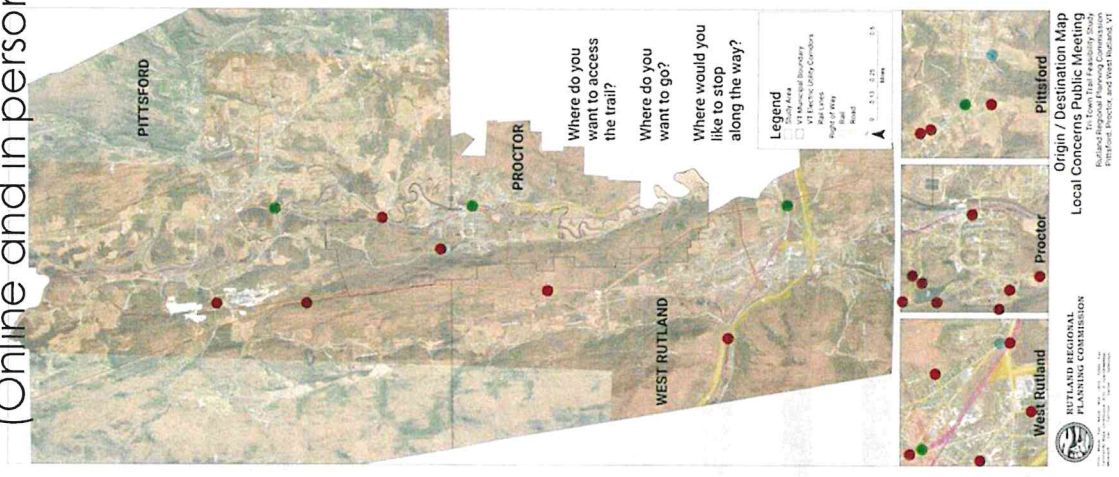
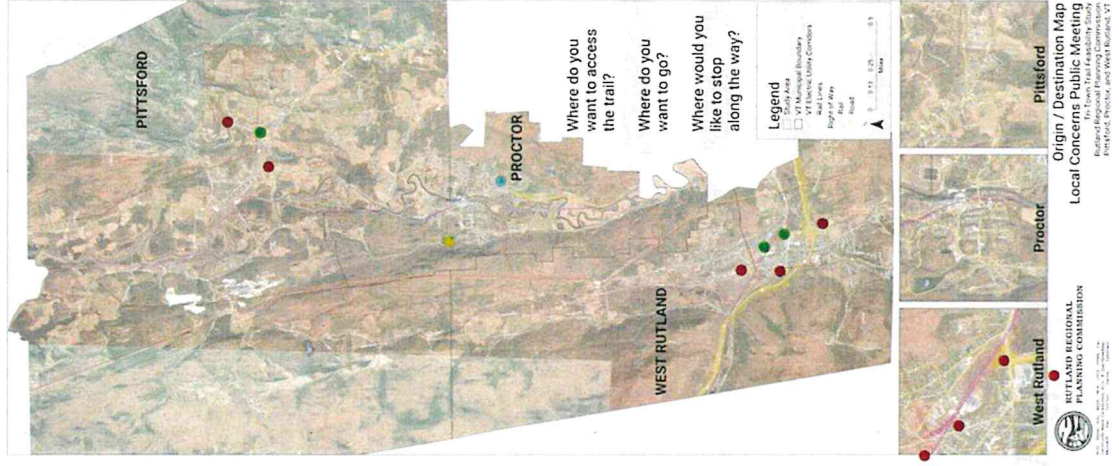
- Highly Confident (comfortable riding on roads with vehicular traffic)
- Somewhat Confident (comfortable on bike lanes without physical separation)
- Interested but Concerned (willing to ride on fully separated facilities or quiet residential roads)
- Non-Bicyclist (do not ride bicycles or unable to)

(Online)

Tri-Town Trail Community Mapping



(Online and in person)



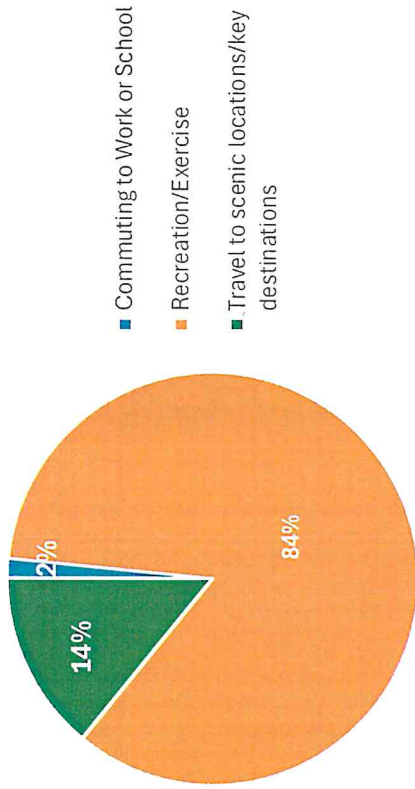
WEST RUTLAND REGIONAL PLANNING COMMISSION
 Origin / Destination Map
 Local Concerns Public Meeting
 Tri-Town Trail Feasibility Study
 Rutland, Proctor, and West Rutland, VT

WEST RUTLAND REGIONAL PLANNING COMMISSION
 Origin / Destination Map
 Local Concerns Public Meeting
 Tri-Town Trail Feasibility Study
 Rutland, Proctor, and West Rutland, VT

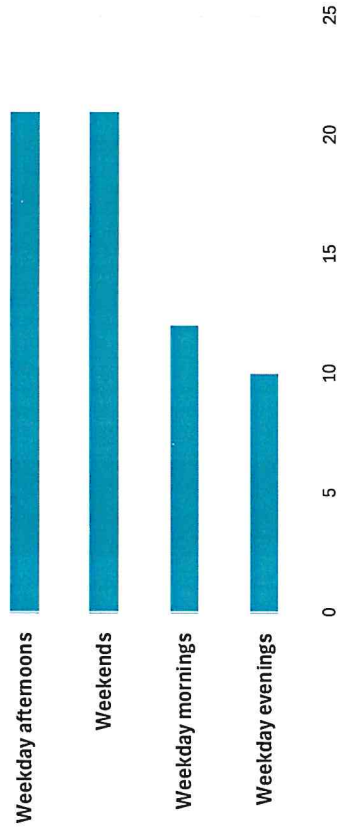


Local Concerns Meeting and Survey Findings (June 12, 2024)

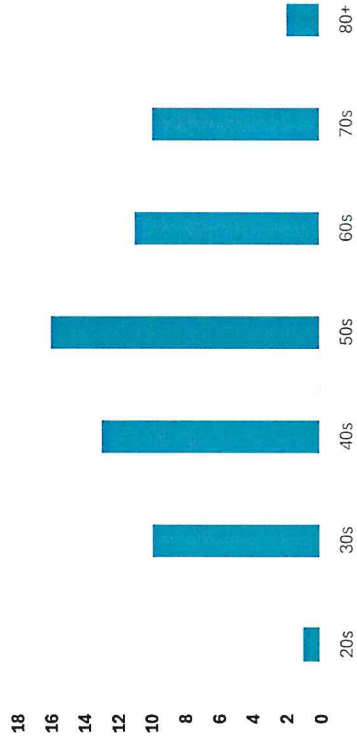
Why will you use the trail?



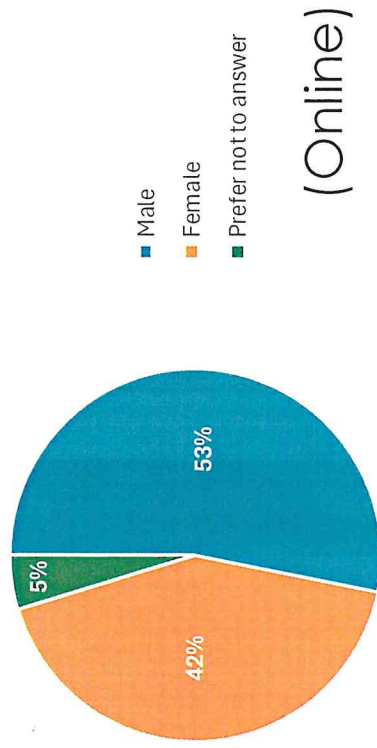
When are you most likely to use the trail?



Age Demographic

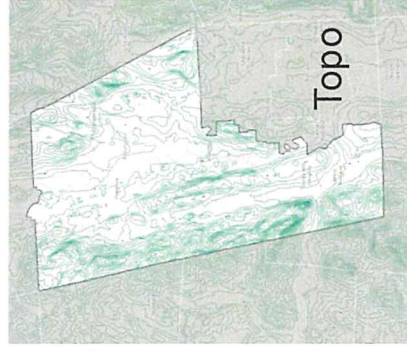
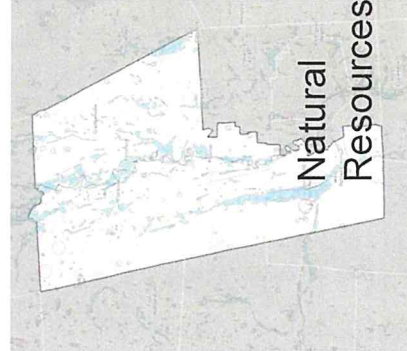
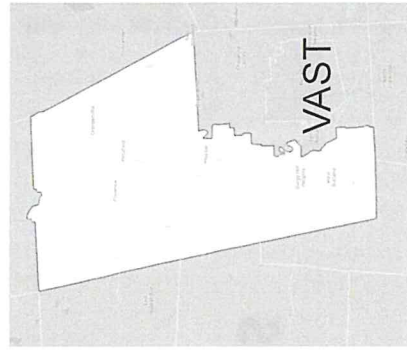
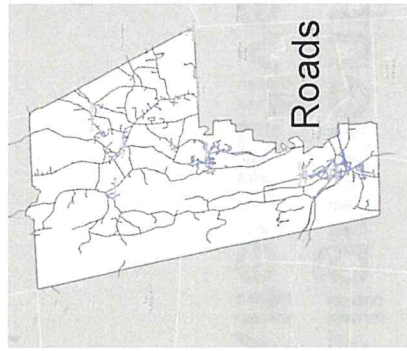
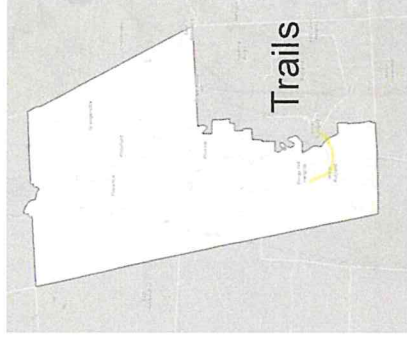
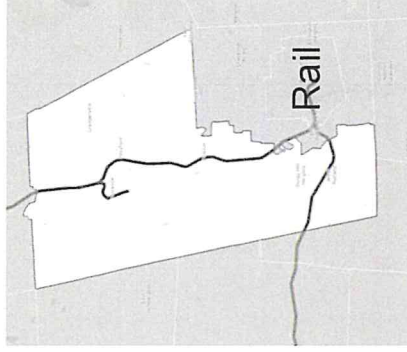
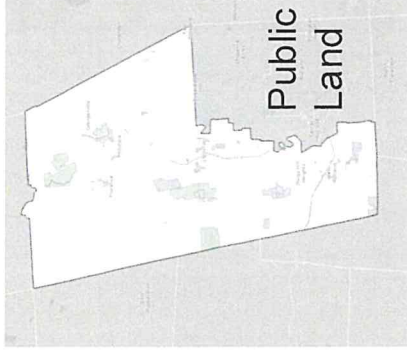


Gender Demographic



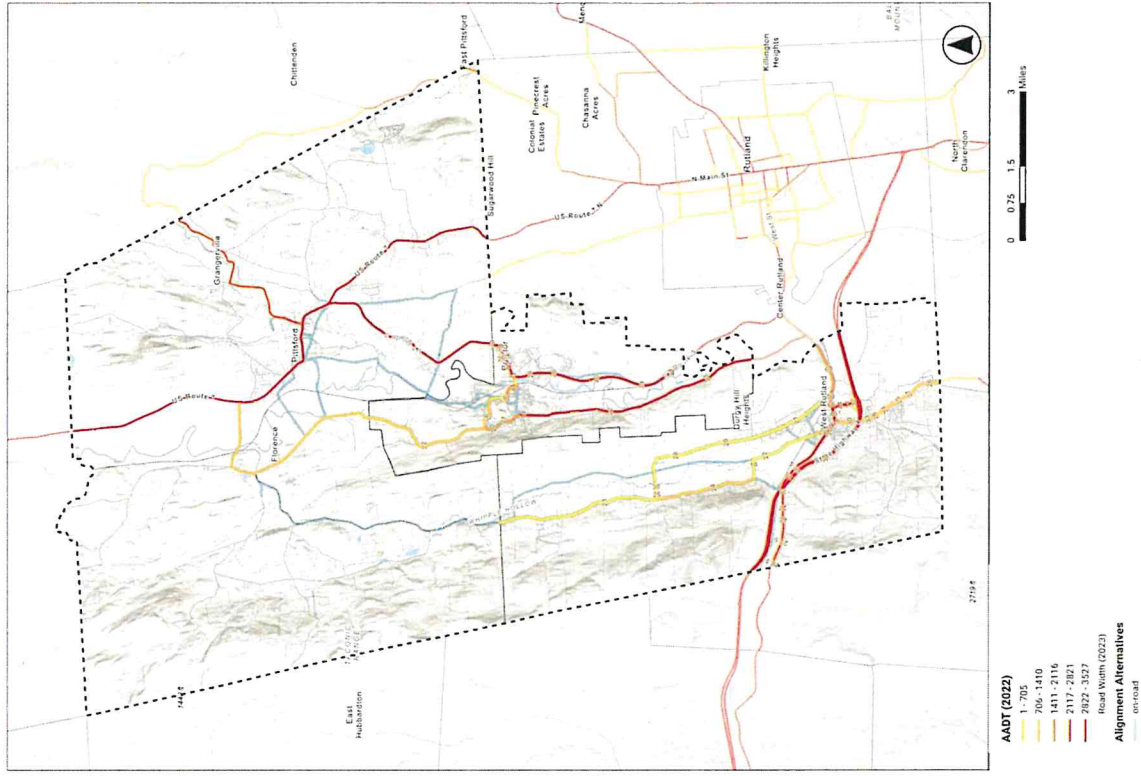
(Online)

Existing Conditions

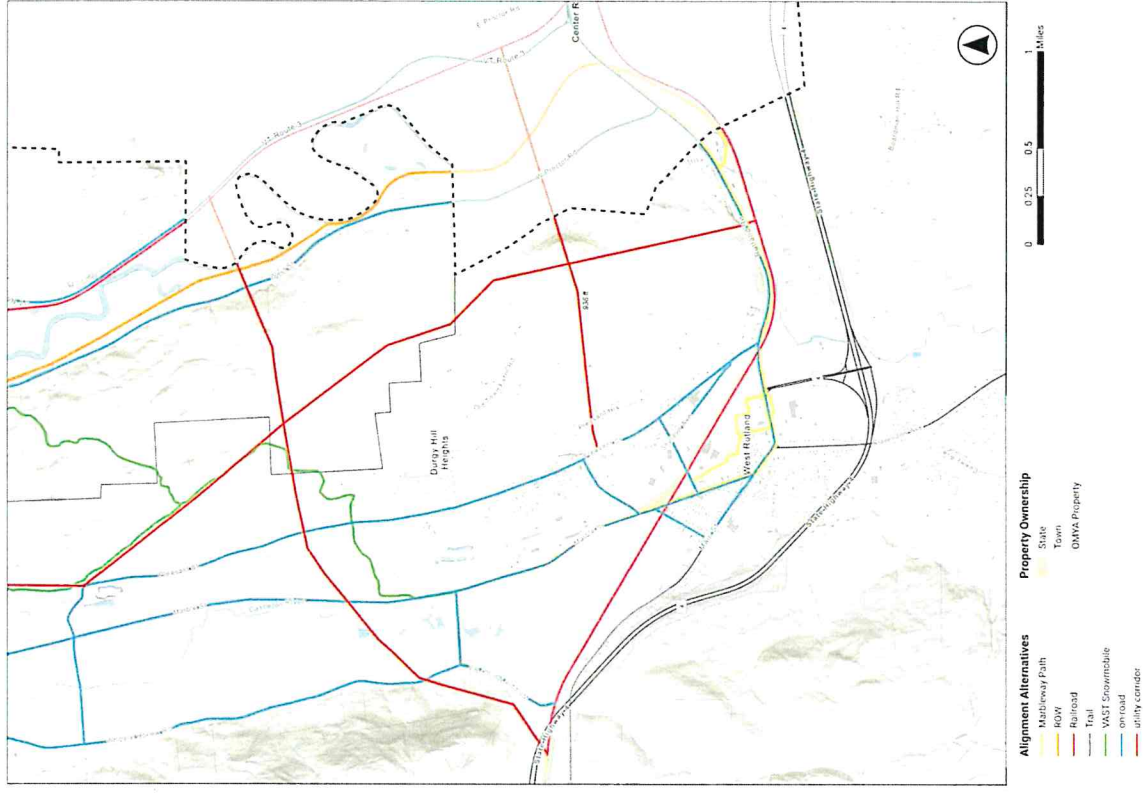


Alignment Alternatives

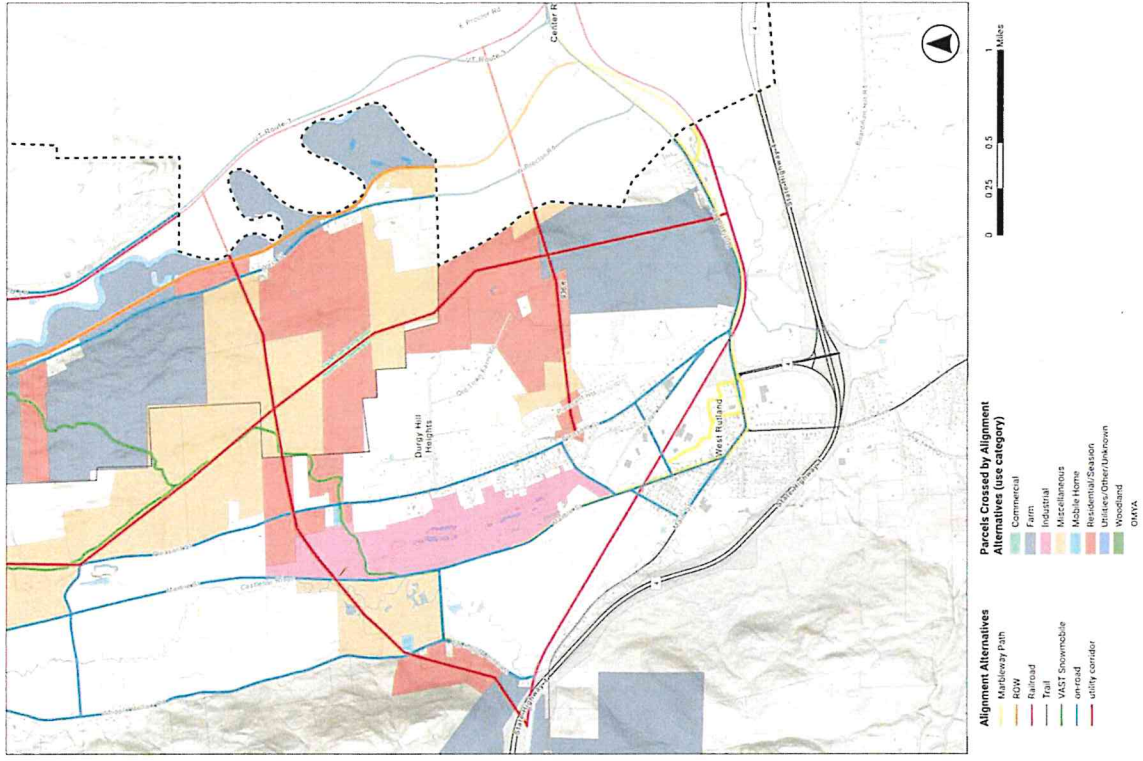
- AVERAGE ANNUAL DAILY TRAFFIC (AADT)
- ROADWAY WIDTH



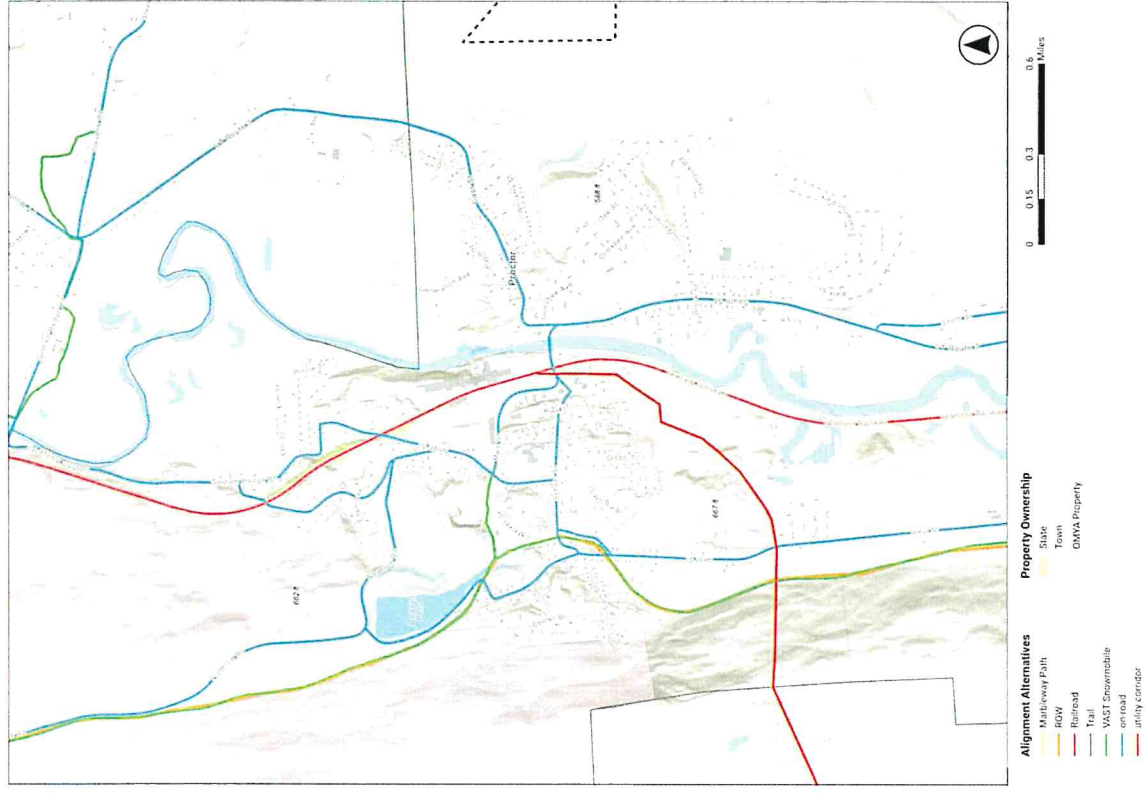
Alignment Alternatives WEST RUTLAND



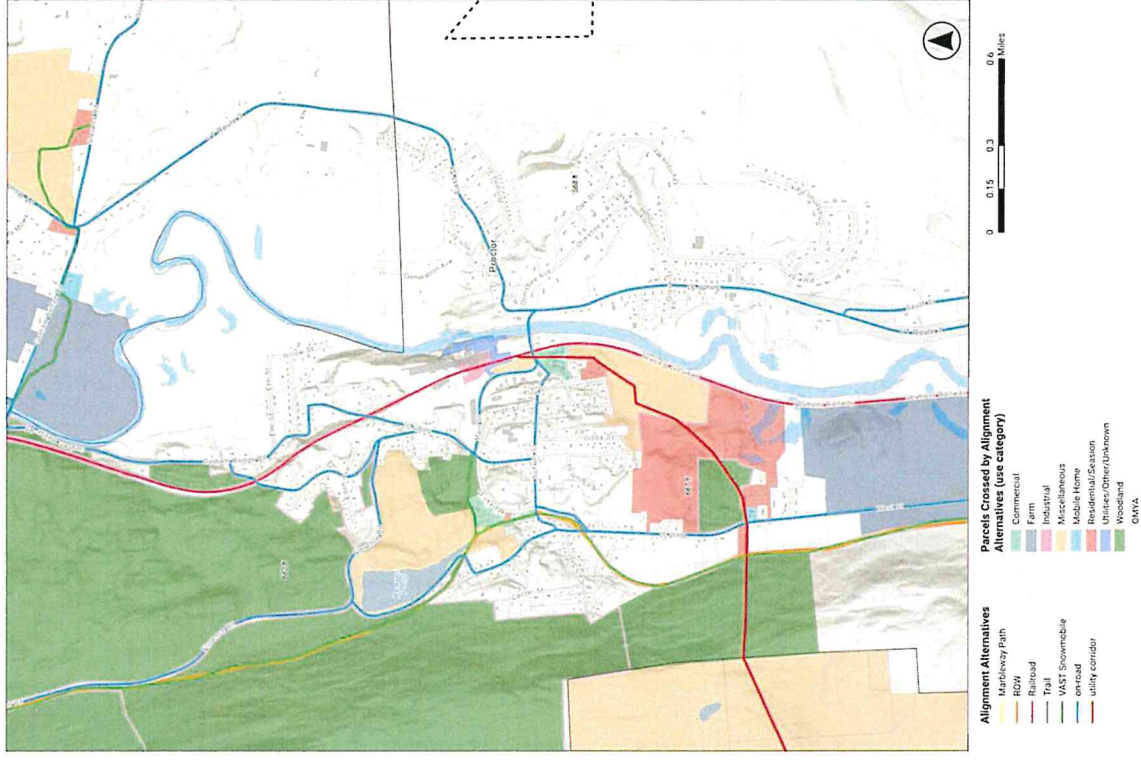
Alignment Alternatives WEST RUTLAND – Impacted parcels



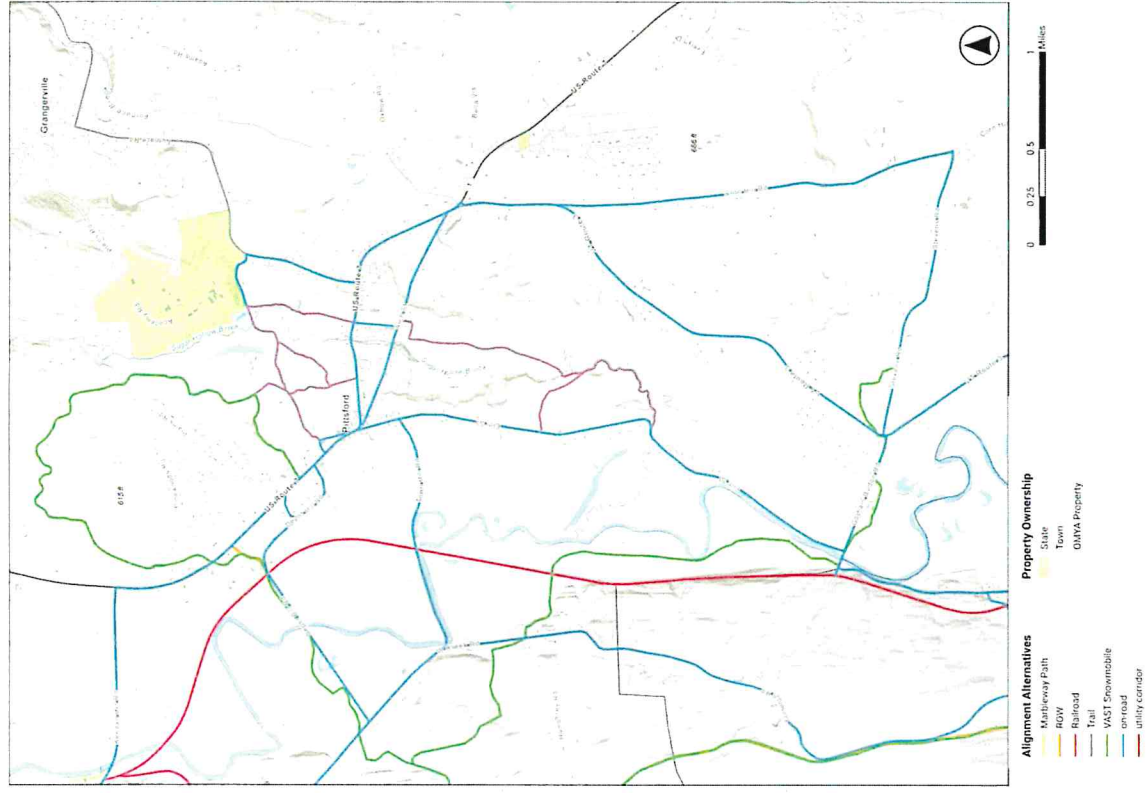
Alignment Alternatives PROCTOR



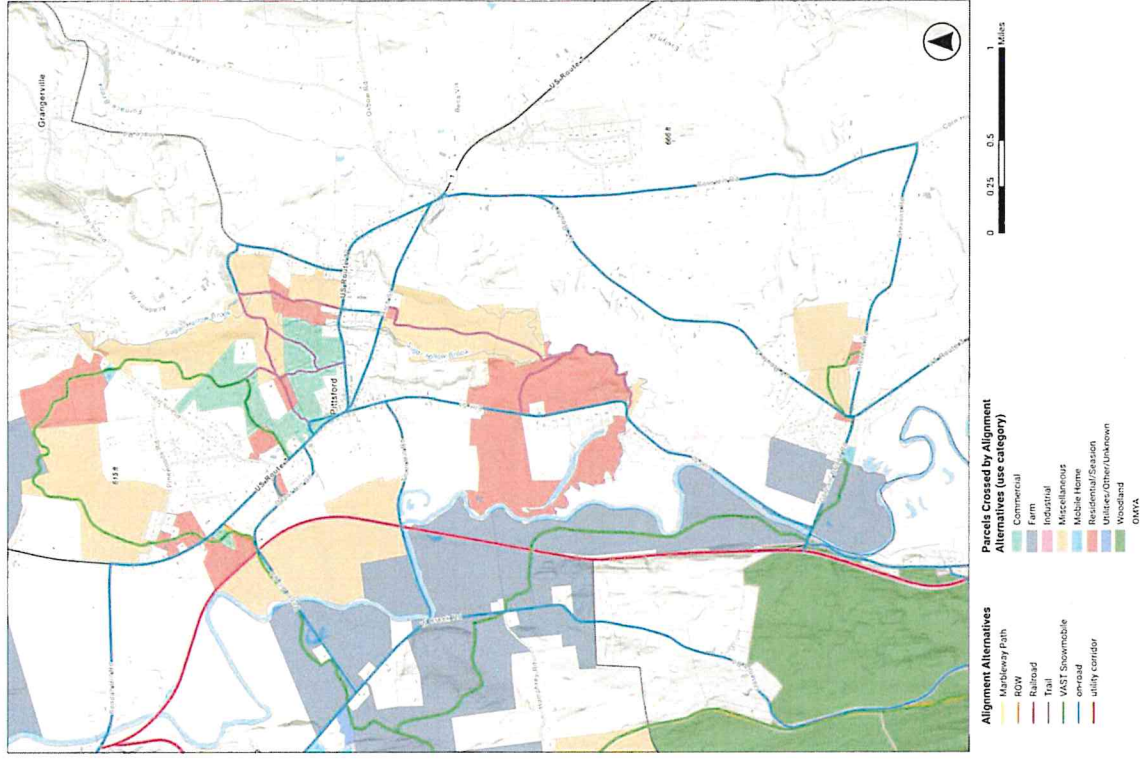
Alignment Alternatives PROCTOR – Impacted parcels



Alignment Alternatives PITTSFORD



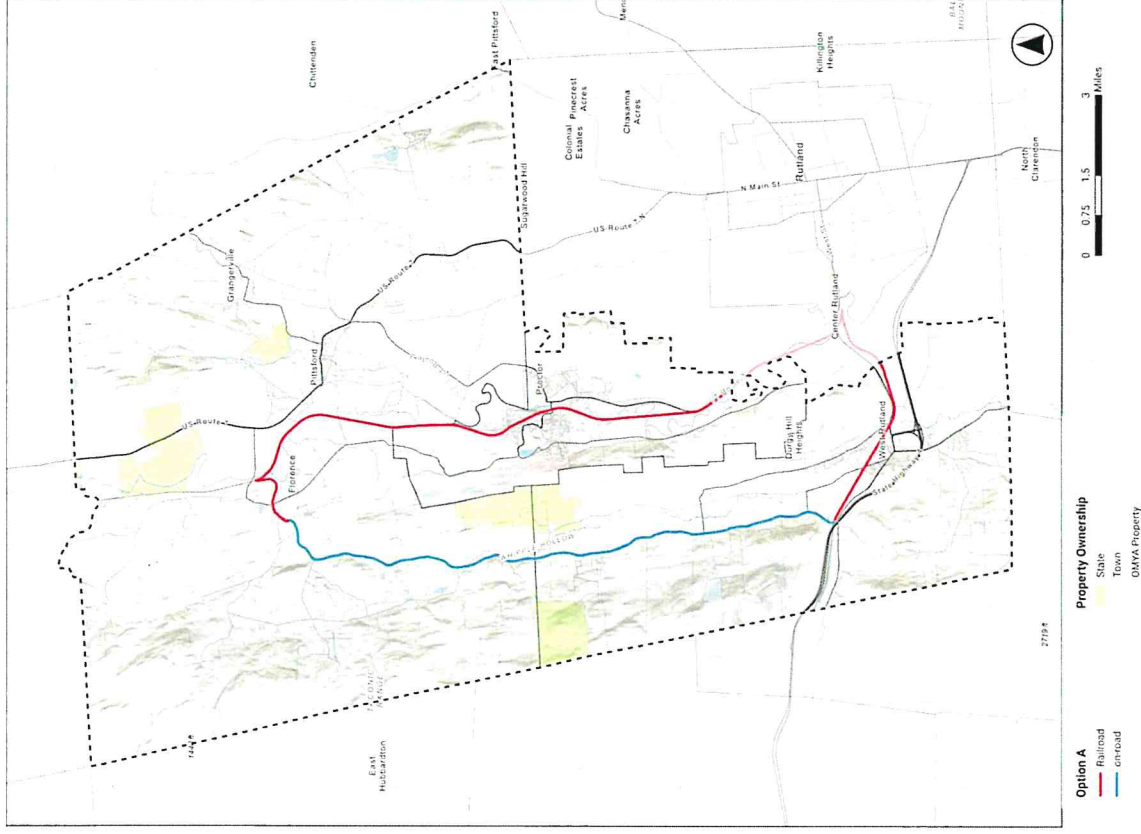
Alignment Alternatives PITTSFORD – Impacted parcels



Alignment Alternatives

OPTION A

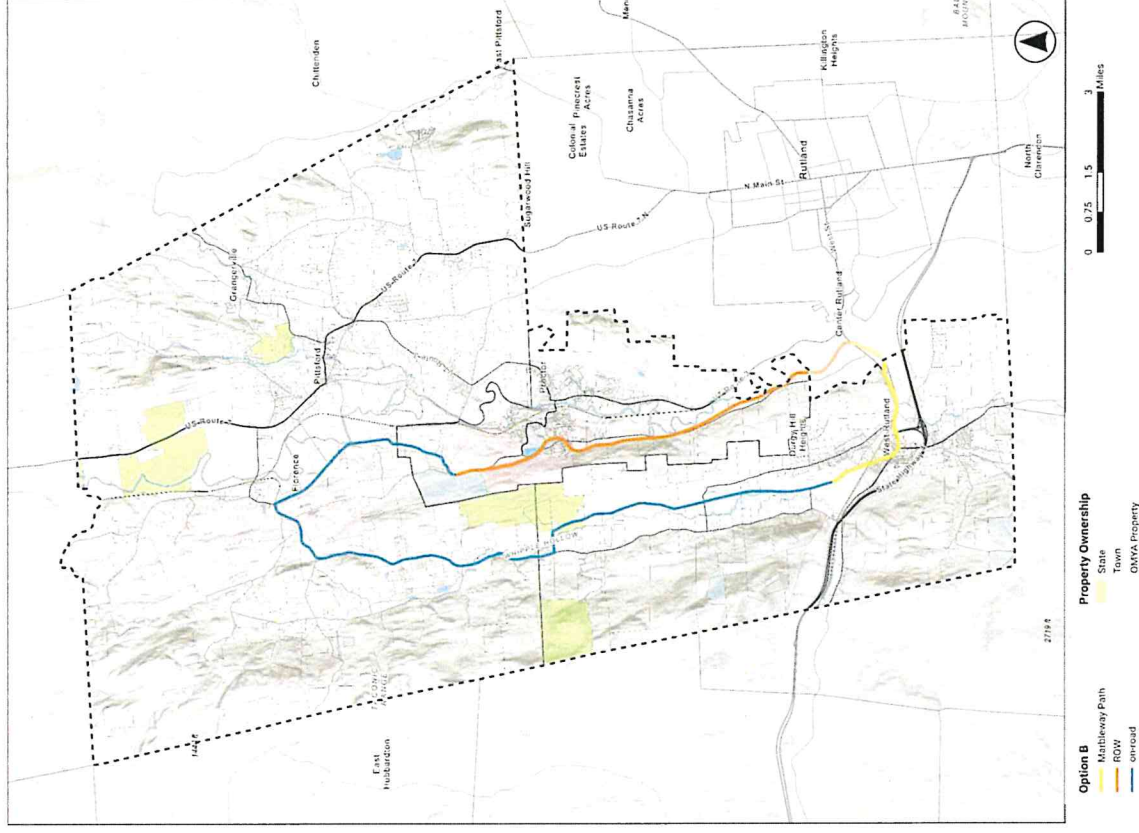
- Total Miles – 21.5 Miles
- On-Road: Whipple Hollow Rd – 9 Miles
- Off-Road: Trail with Rail – 12.5 Miles
- Potentially no parcels impacted (alignment located in existing road and rail ROW)
- Spur to Pittsford still needs to be identified
- Enters Rutland on Railroad corridor



Alignment Alternatives

OPTION B

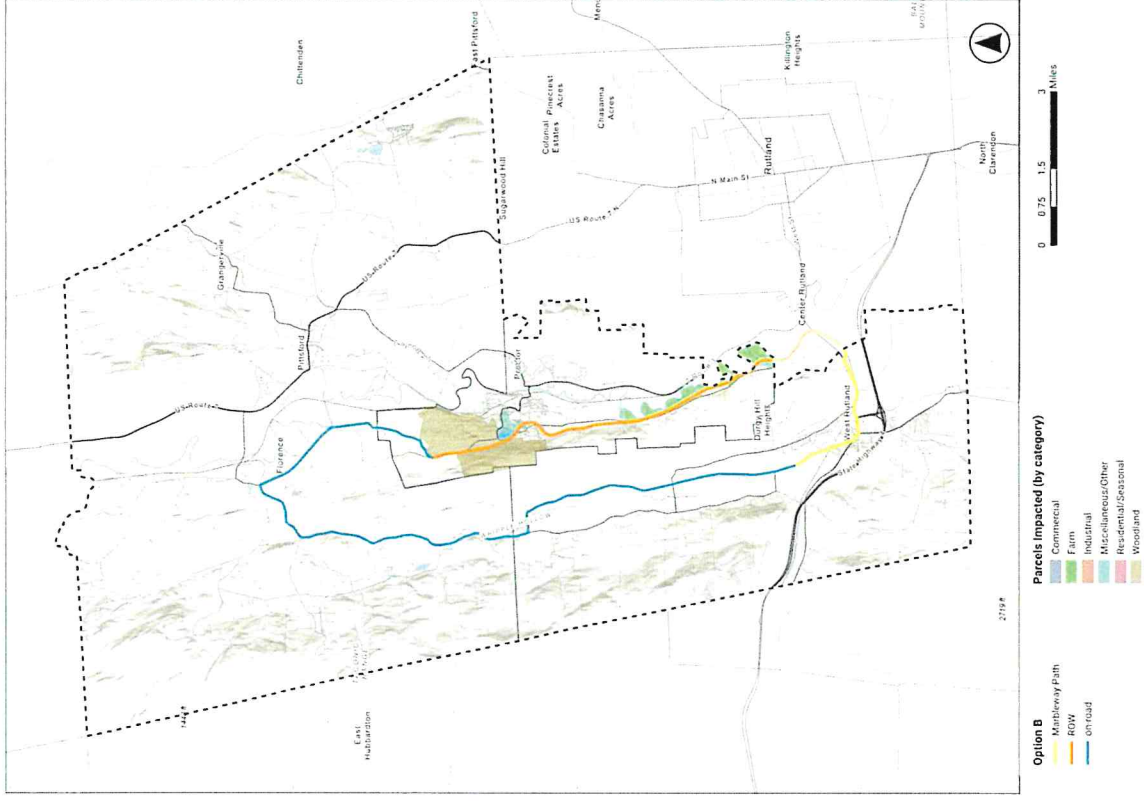
- Total Miles – 20.5 Miles
- On Road: 11.5 Miles
- Off-Road: OMYA ROW and MarbleWay— 9 Miles
- OMYA ROW Corridor by Beaver Pond
- Needs a spur to Pittsford



Alignment Alternatives

OPTION B – Parcels Impacted

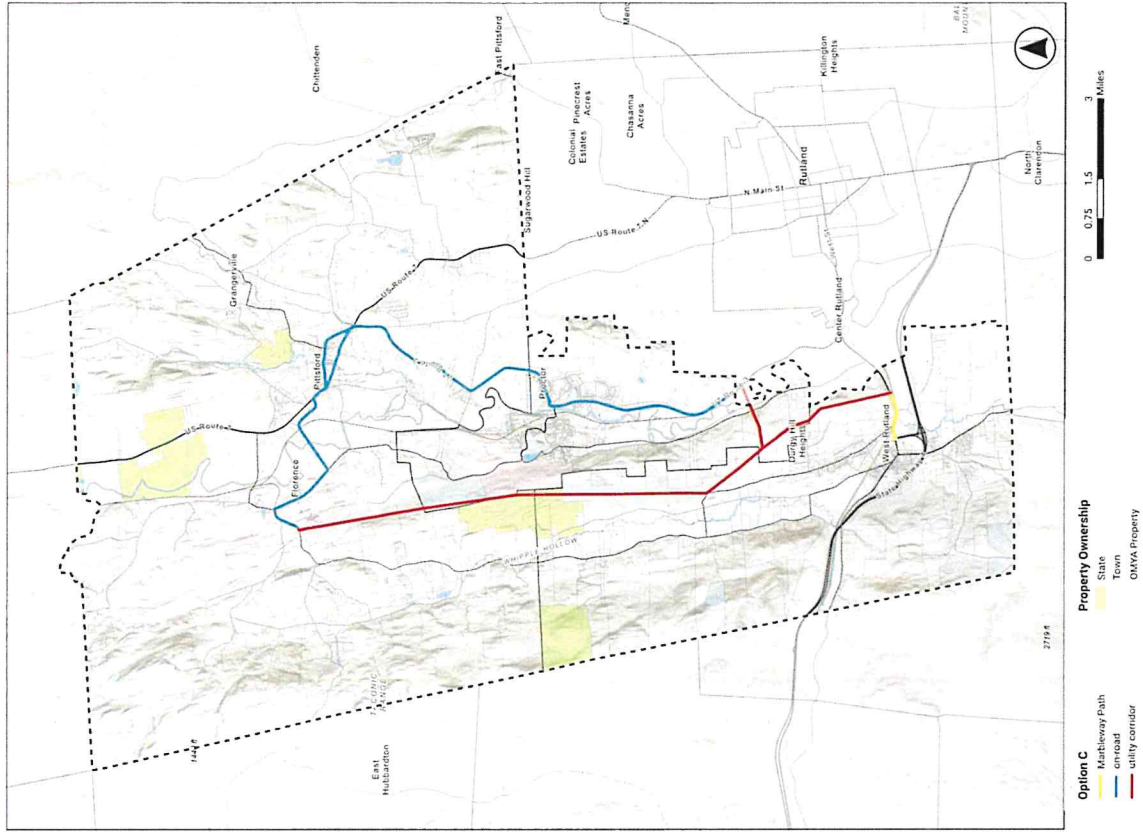
- 9 parcels potentially impacted
 - 1 Commercial
 - 1 Farm
 - 5 Misc/Other
 - 1 Residential/Seasonal
 - 1 Woodland



Alignment Alternatives

OPTION C

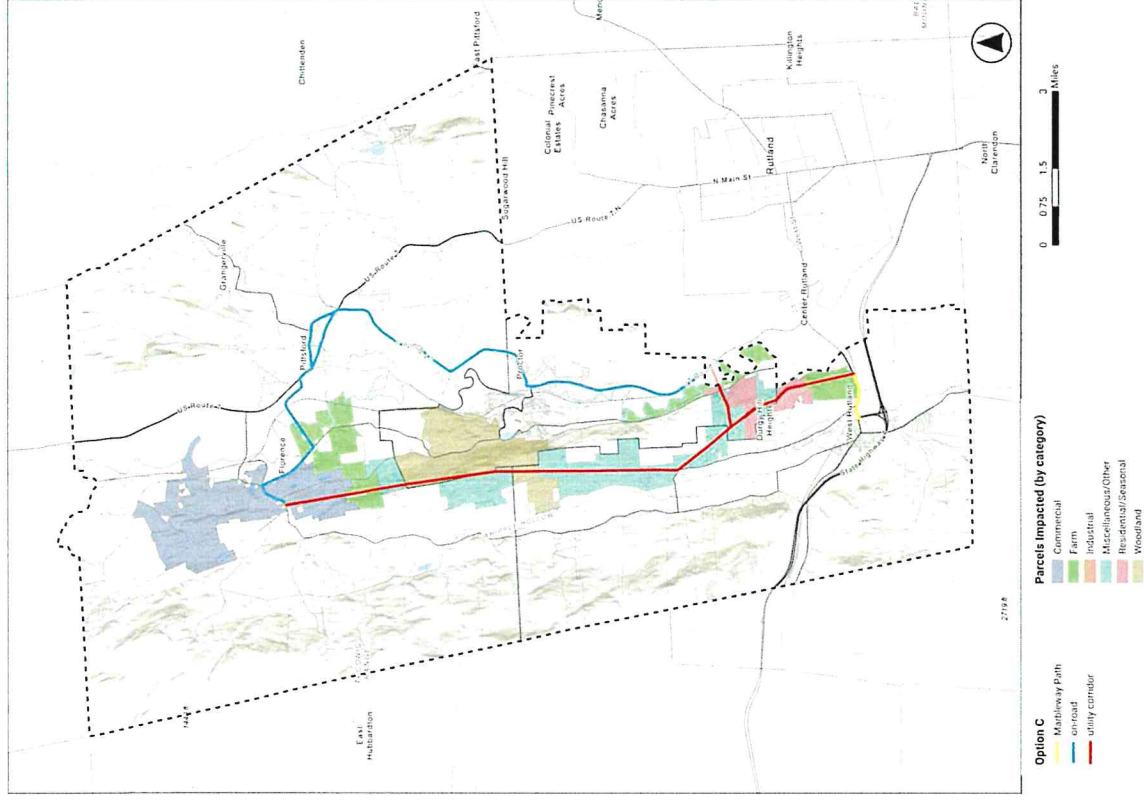
- Total Miles – 21 Miles
- On Road: Whipple Hollow – 11 Miles
- Off-Road: Utility and MarbleWay– 10 Miles
- OMYA ROW crossed for Utility corridor
- Only on-road options through Proctor and Pittsford



Alignment Alternatives

OPTION C – Parcels Impacted

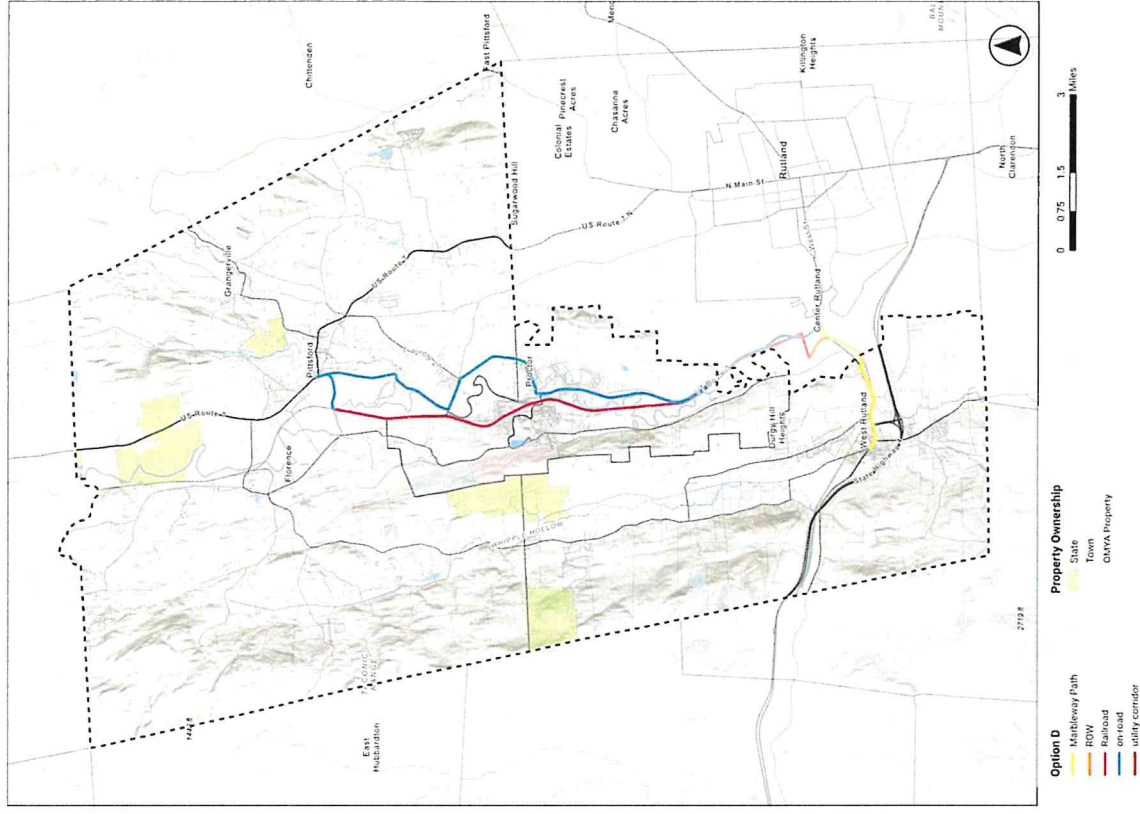
- 31 parcels potentially impacted
 - 5 Commercial
 - 3 Farm
 - 3 Industrial
 - 13 Misc/Other
 - 4 Residential/Seasonal
 - 3 Woodland



Alignment Alternatives

OPTION D

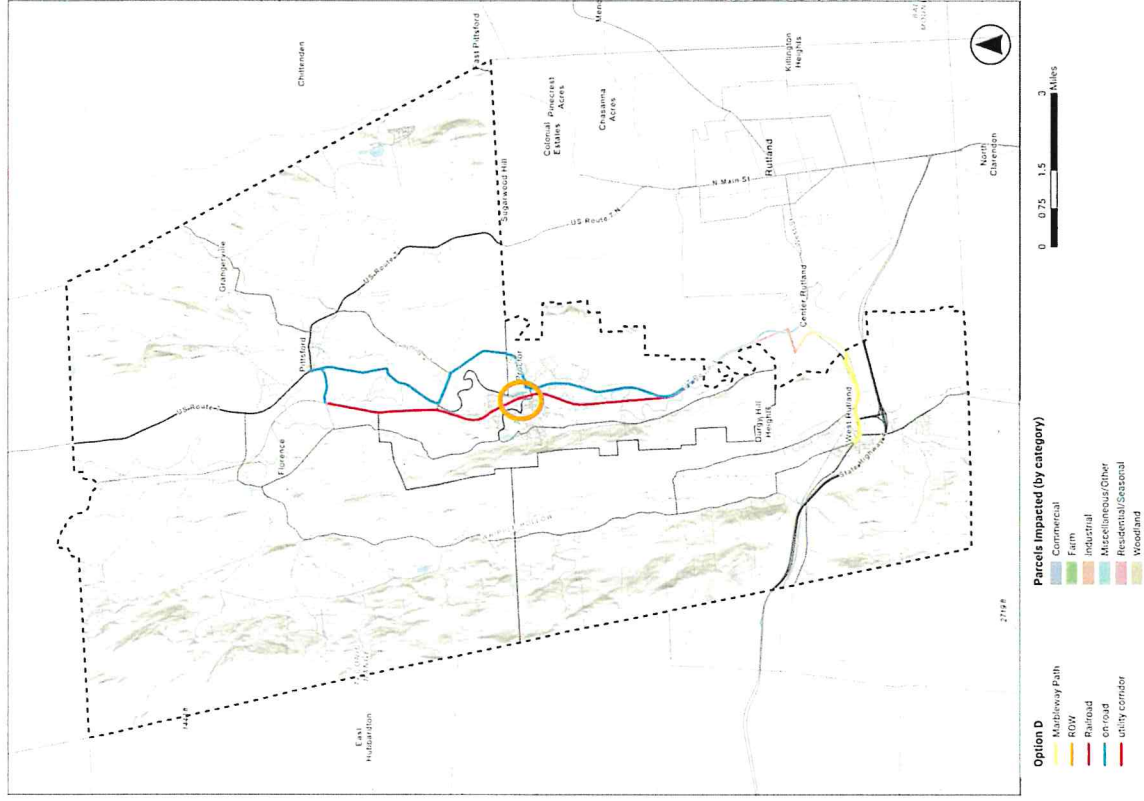
- Total Miles – 22 Miles
- On-Road: 12 Miles
- Off-Road: ROW, MarbleWay, Rail with Trail – 10 Miles



Alignment Alternatives

OPTION D – Parcels Impacted

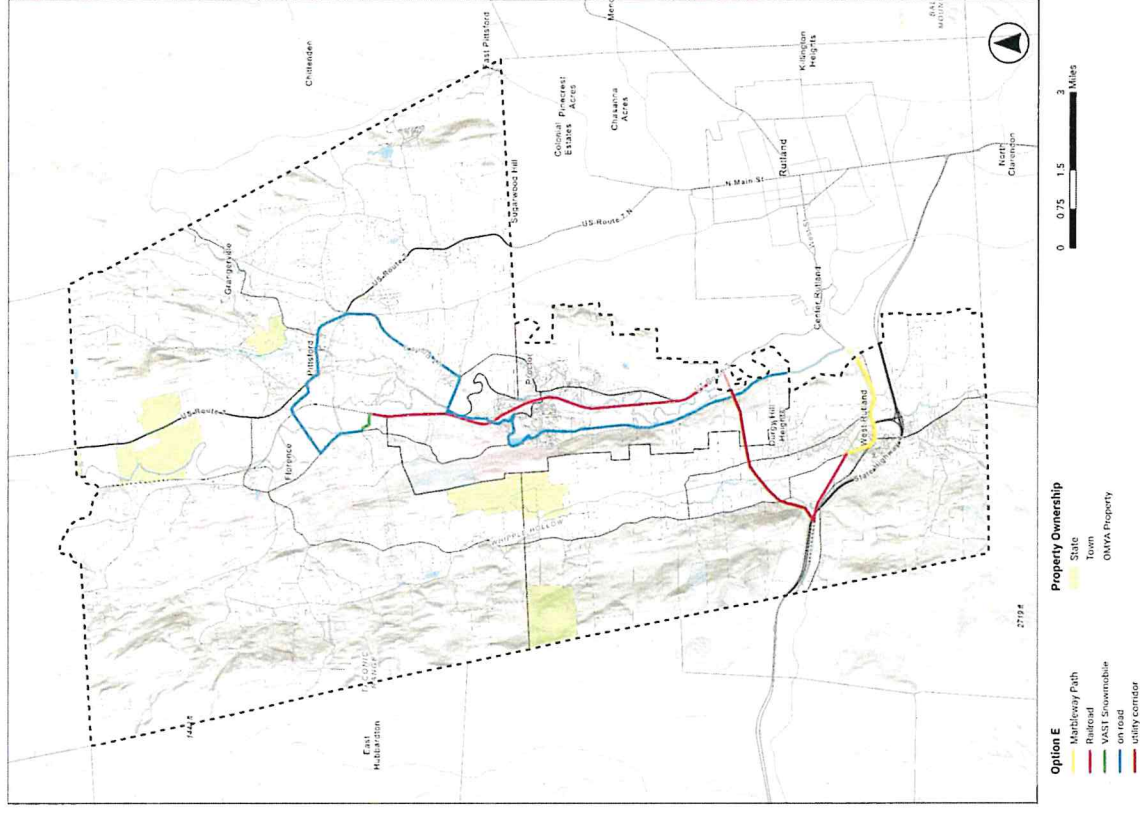
- 3 parcels potentially impacted
 - 1 Industrial
 - 2 Misc/Other



Alignment Alternatives

OPTION E

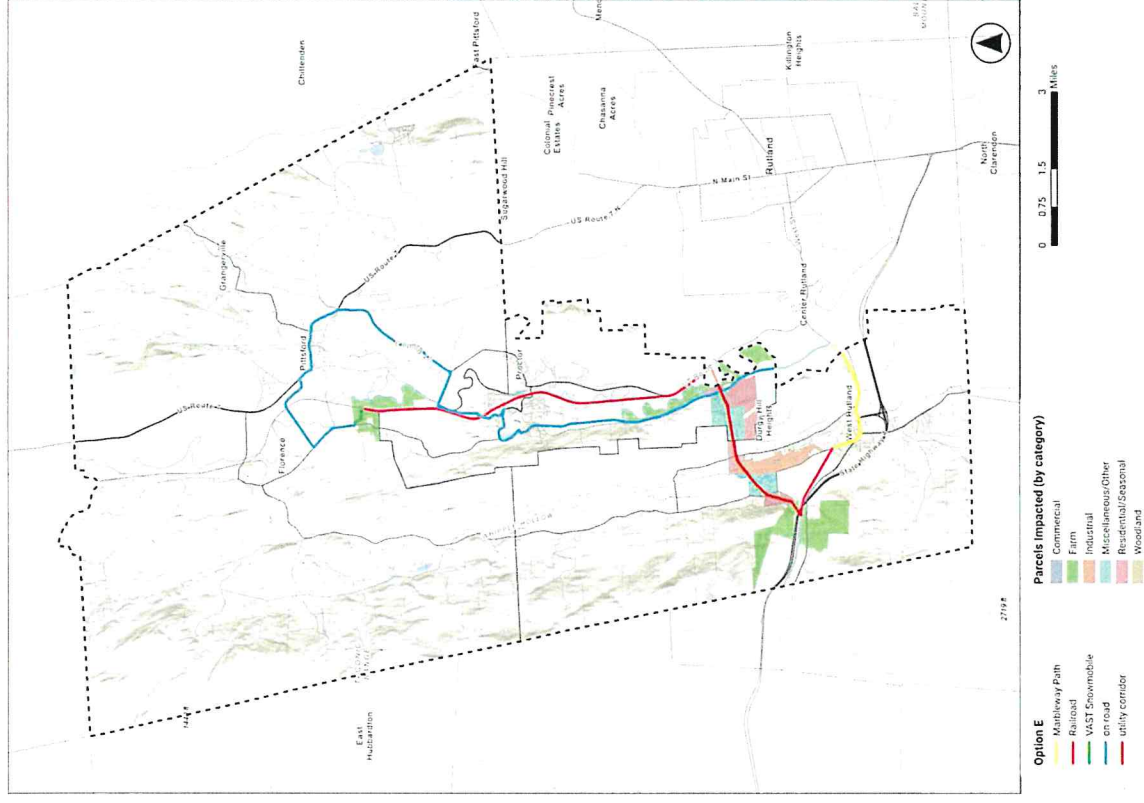
- Total Miles – 24.6 Miles
- On-Road: Whipple Hollow – 12.3 Miles
- Off-Road: (Marbleway, Utility, Rail with Trail, VAST)– 12.3 Miles
- Only on-road access through Pittsford, but opportunity to add spurs
- Briefly crosses into Rutland



Alignment Alternatives

OPTION E – Parcels Impacted

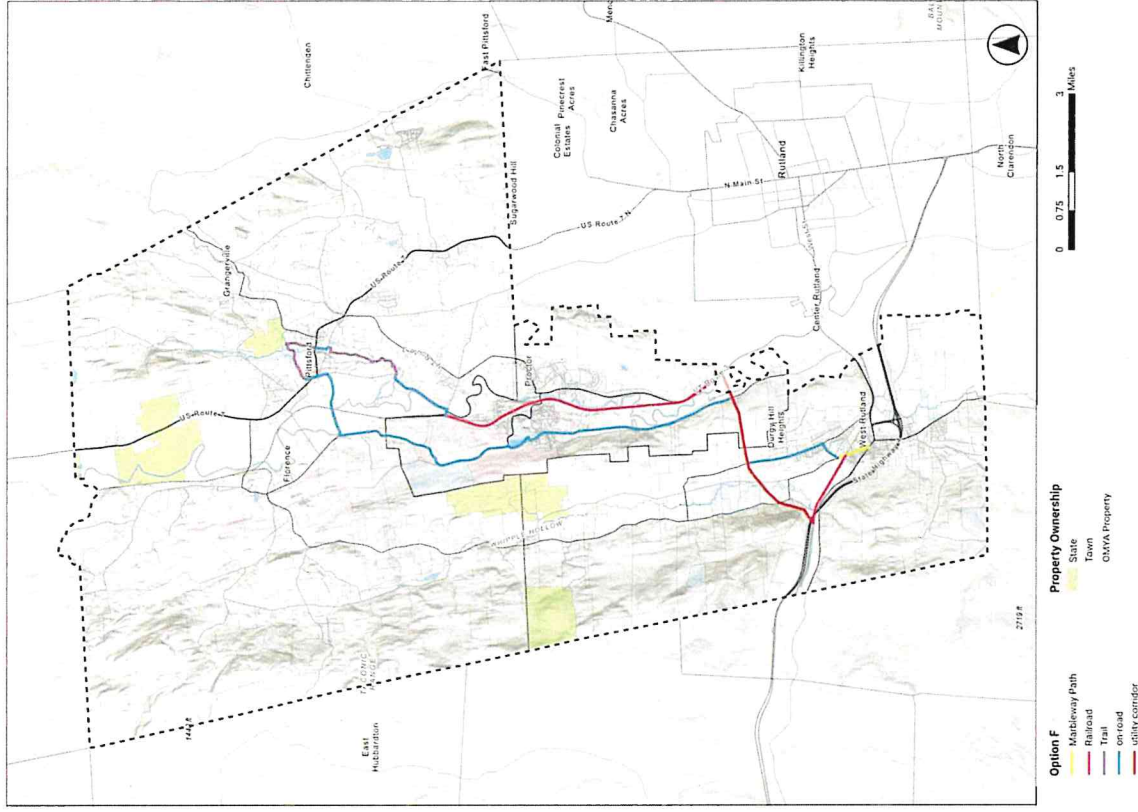
- 24 parcels potentially impacted
 - 4 Farm
 - 2 Industrial
 - 7 Misc/Other
 - 11 Residential/Seasonal



Alignment Alternatives

OPTION F

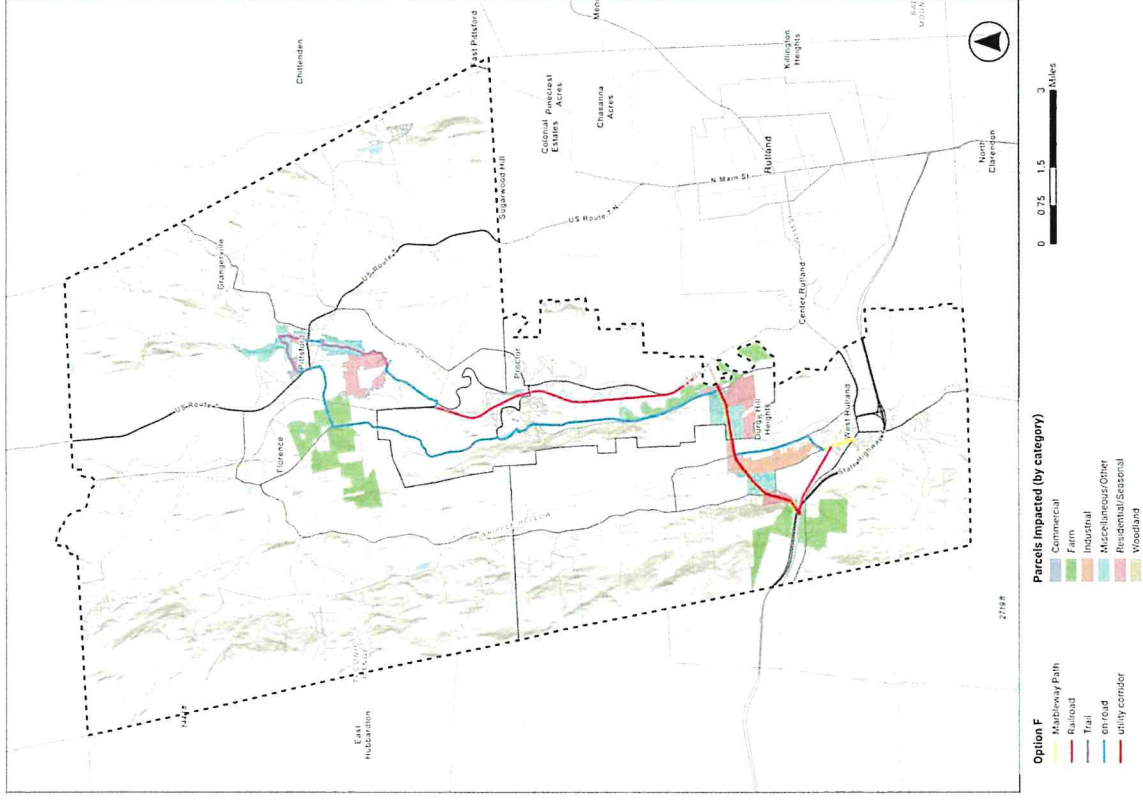
- Total Miles – 20.4 Miles
- On-Road: 9.8 Miles
- Off-Road: Rail with Trail, MarbleWay, Utility Corridor and Pittsford Trails – 10.6 Miles
- Requires on-road sections



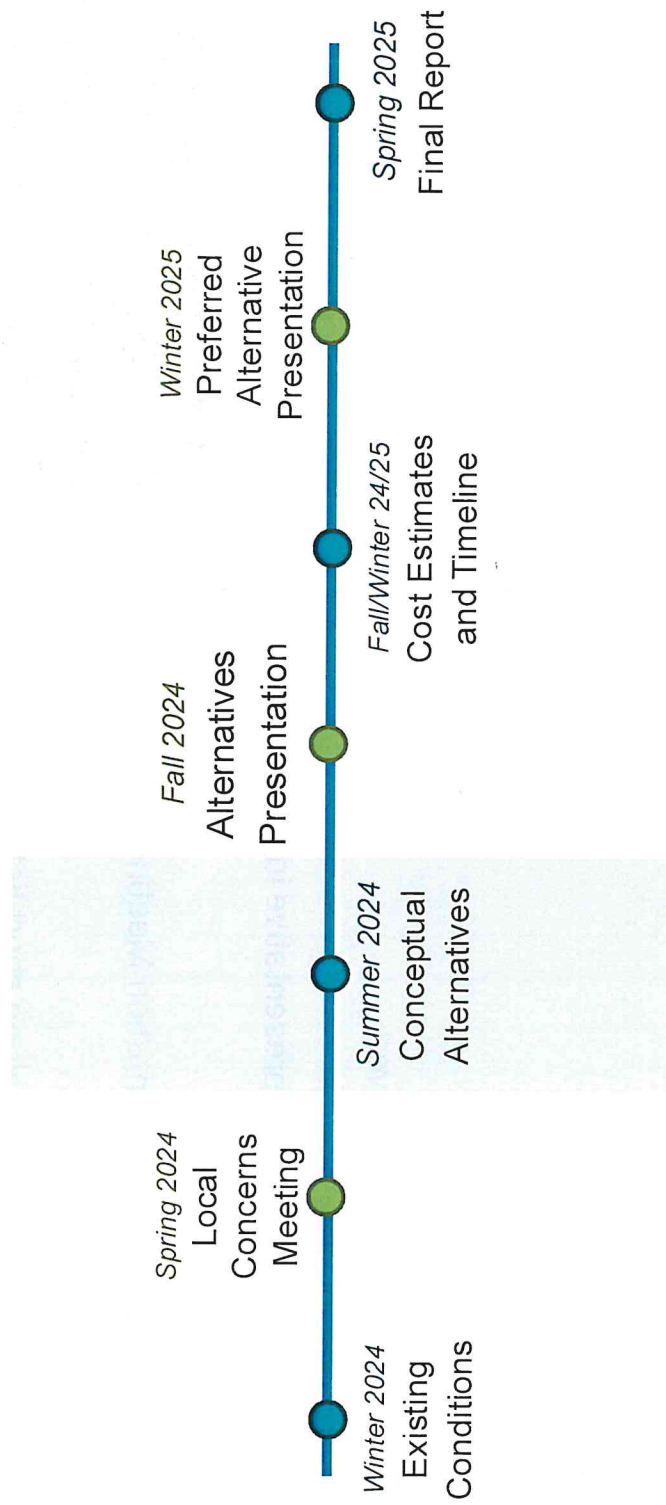
Alignment Alternatives

OPTION F – Parcels Impacted

- 35 parcels potentially impacted
 - 2 Commercial
 - 3 Farm
 - 2 Industrial
 - 12 Misc/Other
 - 16 Residential/Seasonal



Next Steps



Next Steps

- **Stantec**
 - Identify short list of alternatives
 - Prepare concept graphics
 - Prepare typical sections / representative images
- **Rutland RPC**
 - Schedule Alternatives Presentation Meeting (October)
- **Towns**
 - Identify existing easements along short list of alternatives

Upcoming Meetings

Alternatives Presentation Meeting –
October 2024

Study Team Meeting #3 – November
2024