

Fall 2012

Volume 7, Issue 4

MUNICIPAL

OFFICE HOURS:

Mon. through Wed.

8-4:30

Thursday

8- 6

Friday

8-3

After Hours Drop
Box on Left of Front
Parking Lot Exit

Phone:

802-483-6500

Bowen-Walker Harvest Fair 1
Disc Golf

Pittsford Farmer's Market 2
Pittsford Business Commu-
nity Group
Town Report Reminder
Sheep Festival
Pumpkin Party
Vacancies
Budget Season

Maclure Library 3
Summer Music Series

Pittsford Seniors Luncheon 4
Pittsford Trails

Pittsford Recreation: 5
Lothrop Basketball
Aerobic Workout
Annual Craft Fair
Teen Nights
Women's/ Men's Basketball

Lothrop School News 6
School Bus Safety
Transfer Station News
Solid Waste Collection
Sewer System Upgrade
Highway Paving Projects
Fire Hydrants

Pittsford Food Shelf 7
Pittsford Historical Society
Listers' Report

Haunted House 8
Dates to Remember

"Sunshine Village"

Town of Pittsford Newsletter

PITTSFORD'S HARVEST FAIR IS ON!

The 8th Annual *Home Grown & Hand Made Harvest Fair* is taking place on Saturday, 9/29, rain or shine, US Rte. 7 adjacent to the Village Green.

We look forward to providing you with the best the area has to offer:



- Decorate your pumpkin and bring it to the Marble Valley Grange *DECORATED PUMPKIN CONTEST* area for a chance to win a prize. All ages and types of decoration are welcome! Judging starts at 11:00.
- A delicious *CHICKEN BBQ* will be available starting at 11:00 until sold out. \$8.00/plate includes a ½ chicken, sides, and beverage.
- Raffles? We've got 'em! Gift Basket and Queen-sized Quilt Raffles end at 3:30 and winners are announced at 3:45.
- Local produce! Pumpkins, gourds, squash, and more...
- Syrup, jams, jellies and preserves!
- Jewelry!
- Wool yarn and products!
- Quilts and wall hangings! Gorgeous!
- Baked goods and breads of all kinds! Yum!
- Natural decorations!
- Hand-knit and crocheted items from Pittsford's KNITWITS - sales directly benefit the BOWEN-WALKER FUND.
- The BOO Mobile!
- The Pittsford Business Association will be represented.
- Dairy – a calf and milk!



For further information, contact Elizabeth Frost (483-9972) or PittsfordHarvestFair@comcast.net
See you at the Fair, and thank you for helping to support your neighbors and the Bowen-Walker Fund!

2nd ANNUAL FALL DISC GOLF TOURNAMENT



Saturday, October 20, 2012 9:00 AM SHOTGUN START

Check-in between 8:00 am – 8:30 am. Announcements at 8:30 am. Shotgun start @ 9:00 am Rain or Shine. Bring your own discs.

To register, fill in registration form available from Pittsford Recreation Department and return with fees included.

The tournament fee is \$10.00 per person. (Checks should be payable to the Pittsford Recreation Department) The fee includes 18 holes of disc golf, hot chocolate and a fun time!
Pre-register by Wednesday Oct. 17th!!! There is a maximum of 36 teams-Sign up TODAY.

If you have any questions, please contact the Pittsford Recreation Department, 802-483-6500 ext. 17 or Recreation@pittsfordvermont.com.

PITTSFORD BUSINESS COMMUNITY GROUP & PITTSFORD FARMER'S MARKET

The Pittsford Farmer's Market Inc. is open Saturdays, 9:30am-2pm., through October 27th, (unless inclement weather gets the best of us).



The State has approved us for "The Farm to Family" program; we will be able to accept their coupons for fruits & vegetables starting in June 2013.

On Saturday, Sept. 29th, we will be joining The Home Grown & Hand Made Harvest Fair, at the Pittsford Congregational Church grounds & Town Green (121 Village Green-US Rte. 7).

The Farmer's Market & Craft Show is moving indoors to the Lothrop School Gymnasium on Saturdays-Nov.24, Dec.1, 8, and 15. We are still happily accepting new vendors (\$15 membership fee and only \$5 per week). For information contact either Kelley Lyon at 483-2218, vtmusictherapy@comcast.net or Sally Eugair at eugair@aol.com.

The Pittsford Business Community Group will be having a **Breakfast Business Meeting on Thursday, Oct. 11, 8:30a.m.**, at JR's Eatery. We will also be represented at the Harvest Fair on Sept. 29th at the Congregational Church grounds.

The Pittsford Business Community Group's "Holiday Raffle & Town-Wide Decorating Contest" starts Thanksgiving week. Any business, institution or individual who would like to donate a prize or enter the contest may go to our website for details, at www.pittsfordbusinesscommunity.com.



The "Holiday Shopping After-Hours Event" will be **December 14th, 4-8p.m.** (give or take an hour.). All businesses and institutions are encouraged to "Light-Up & Stay Open" !



Open venues and special events will be listed on the website and advertised. To volunteer, and for more information contact Kelley

Lyon at 483-2218 or vtmusictherapy@comcast.net. Please check our website often for the area's many Fall Event listings and descriptions at www.pittsfordbusinesscommunity.com.



TOWN REPORT REMINDER

Pittsford Town Report submissions will be due **January 1, 2013**. This is just a reminder for department heads, elected officials, boards, organizations, associations and appropriation-recipients to be thinking about your submission and financial reports. Letters will be sent out in early **November, 2012** requesting needed information and the e-mail address to which to send the reports by **January 1, 2013**. Thank you, Janet Mondlak, Town Report Coordinator. Questions, please contact Linda Drummond at the Town Office 483-6500 X10, Asst2manager@pittsfordvermont.com.

PITTSFORD SHEEP FESTIVAL

Come join us for the 19th annual Pittsford Sheep Festival. It will be held on Sunday, October 7th behind the Vermont Camera Works on Route 7. The festival starts at 11:00 am and continues until 4:00 pm. We will be working our border collies and shearing sheep. There will be spinning and weaving demonstrations, music and refreshments. Craft and fiber artisans will have their products for sale. There will be 4H sheep fitting demonstrations and a hands-on felting project for the kids. You can call Jim McRae at 483-2463 for further information. Parking is at Barnard's Funeral Home. In case of very bad weather, we will see you next year.



PITTSFORD PUMPKIN PARTY

Dress warmly and join us for a fun-filled morning! Hay Rides, Popcorn, Crafts, Face Painting, Storytelling, Books and for the younger ones a PUMPKIN HUNT! Come decorate a pumpkin just the way you like it!

DATE: Saturday, October 20

TIME: 10:00am - 11:30 am

WHERE: Pittsford Recreation Area

FEE: Free

**In conjunction with the Maclure Library*



Deadline for the next Pittsford Newsletter is January 15, 2013. Please send articles to Linda Drummond at Asst2manager@pittsfordvermont.com.

The Town of Pittsford currently has vacancies for a Pound Keeper and Fence Viewer. Please contact John Haverstock, Town Manager, P O. Box 10, Pittsford, VT 05763

802-483-6500 ext. 20 or Manager@pittsfordvermont.com.



Budget Season Coming Soon!

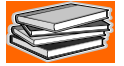


The Select Board will begin its review of the FY2013/2014 budget at its meetings on November 7th and November 21st. During these meetings, the Select Board will review budgets as submitted by Department Heads, and discuss levels of service and staffing for each department in preparation for the Board's public presentation of the budget on December 5, 2012.

Public input is welcomed and encouraged throughout the budget process. Scheduling for review of each department's budget will be posted on the Agendas for the Select Board meetings. If you have a particular interest in attending the budget review meeting on one department or service provided by the Town, please do not hesitate to contact the Town Manager's Office at 483-6500, ext. 20 to inquire about scheduling for the Board's review of that budget. Select Board meetings start at 6:30 p.m. and are held on the first and third Wednesdays of the month in the Municipal Office's Conference Room.

MACLURE LIBRARY NEWS & EVENTS

Better Late Than Never Book Sale



Our *Better Late Than Never Book Sale* will be Saturday, September 29, 9:00 a.m. – 3:00 p.m.

Loads of cookbooks, biographies, manga, and large print books for sale. Most adult hard covers and trade paperbacks are \$1.00 and paperbacks are 50 cents. Children's books \$1.00 and under. Special Priced Table! Held rain or shine under the tents. Kindle raffle! Raffle for a Rick Riordan autographed copy of *Son of Neptune*, the second book in *The Heroes of Olympus* series! See you there.

Pumpkin Party

Dress warm and come to our annual Pumpkin Party. Find and decorate your own pumpkin, eat popcorn, and drink hot chocolate. Face Painting! Pittsford Recreational Center, Saturday, October 20 from 10-11:30 AM.. Rain Site – Lothrop Cafeteria.

Beginning October 1, the days of searching the old card catalog are gone! At last, your community library is entering the 21st century and switching from date stamps, written card numbers, and paper cards to an automated library system, KOHA.

So, what does this mean to you? Your new card not only enables you to see what you have already read and keep track of authors you enjoy, your card brings new online resources, recorded books, and eBooks a few clicks closer. As wonderful as that sounds, the main difference is instead of one family card, every person using library services will have a unique ID number specific to him or her.

We hope the most difficult aspect for you will be remembering to bring your card with you - because you will now need it to borrow materials from the library. Children will receive their own card once in kindergarten, so parents will be able to check out books for preschoolers. However, the staff of the Maclure Library respects your right to privacy and therefore we require everyone to use their own library card. As hard as it will be for parents, when checking out books with your family, we urge you not to use your card for everyone's books, but to encourage your child to use his or her own card. Other family members wanting a card should stop by and sign up for a card to have access to our service and resources.

Family Fun Night Dates: January 4, February 15, and March 1 at the Pittsford Police Academy

Upcoming 2013 Events: Art Auction and Wine and Cheese Tasting; Armchair Travelers Series; Book Discussions; Cocktails for a Cause and Lego Contest

Attention Calvery Preschool Moms: Beginning January 2, we're back to two story hours a week: Wednesday and Thursday morning at 10:00 a.m.

PITTSFORD SUMMER MUSIC SERIES A HUGE SUCCESS



Now is a great time to say thank you to ALL the people who helped our new "Pittsford Summer Music Series" become an instant success. In 2012, instead of sponsoring a single day event like the Pittsford Day Celebration, it was decided to try something different such as evening concerts. On behalf of the Town of Pittsford and the Pittsford Recreation Department, I would like to take this opportunity to say "thank you" to Omya and Jill Blanchard for their continued support of the Pittsford Recreation Department and for making certain these community events happen for our residents to enjoy.

Picture perfect weather for all three events helped draw people to the Pittsford Recreation Area. On Friday, June 1, around 500 people came out to hear "Steve Spensley and friends" play their music and enjoy free ice cream. The event was sponsored by the Maclure Library and Pittsford Recreation Department and got the summer programming kicked off for the Recreation Area.

Over 250 people were in attendance on Saturday, July 14 to enjoy "On the Rocks" which was sponsored by Omya. Their classic sound was enjoyed all over the Recreation Area. Adults and kids alike enjoyed swimming to nearly 9:00 pm that night.

At the final performance of the summer, another 250 people came out to the Recreation Area on Sunday, August 12 to hear the "Aaron Audet Band". Ironically, unknown to me ahead of time, their lead singer Ally Flewelling, is a Pittsford resident and a former lifeguard at the Recreation Area. As the Recreation Director, it's always great to see former employees doing well in life.

I must say thank you to our sponsors, performers, and most importantly the volunteers who made this first summer concert series very memorable for us all. Thank you to Linda Drummond, Jenny Parker and Denise Mahoney for selling t-shirts and 50/50 tickets. They took time out of their personal schedules to assist us during the events.

FYI-Also if you're looking for ways to support future concert events at the Recreation Area or just need a cool Christmas gift idea, donated "Pittsford Summer Concert Series" t-shirts (adult XL & Large \$10.00 or youth Small, Med., Large or XL for \$7.00) will be on sale all winter long. To get yours, contact us at 483-6500 ext. 17 or Recreation@pittsfordvermont.com.



PITTSFORD SENIORS



Pittsford Senior Group Luncheon Menu October-December 2012

| <u>Luncheon Date:</u> | <u>Menu:</u> | <u>Must RSVP by:</u> |
|-----------------------|---|----------------------|
| October 25 | Oriental Pork, Fried Rice, Macaroon Cupcakes | October 16 |
| November 15 | Turkey Dinner, Green Beans, Pumpkin Pie | November 6 |
| December 20 | Roast Beef, Twice-Baked Potatoes, Cookies | December 11 |

A salad bar is included. All foods are homemade, including the soup, bread, and desserts.

Suggested donation of \$4.50 for 60 and up. Must pay \$6.00 if under age 60.

All luncheons are on Thursdays at 1 PM at the Vermont State Police Academy in Pittsford.

If you have any questions or would like to RSVP, please contact Randy Adams, 802 483 6500 ext.17 or Recreation@pittsfordvermont.com. **Reservations are Necessary!**

SINCE AUGUST 2007, OVER 2696 MEALS HAVE BEEN SERVED.

***45 average number of folks per meal!!!**

Join us to see what you're missing...

PITTSFORD TRAILS

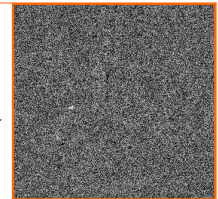
The Chaffee Falls Trail access road has been widened and resurfaced with improved drainage. The work was performed by Wendel Smith Contractors. We thank owner, Stub Smith, for doing a terrific job and donating a portion of the cost to stay within our budget.

This is the time of year when new growth of trees and shrubs can grow into the trail. Trail volunteers gather on occasional weekends with clippers, loppers and saws to cut back branches that are partially obstructing the trail. Everyone seems to enjoy being out on the trail in this beautiful Vermont weather, walking but also performing some important work

Some towns like Stowe have walking and biking paths that cost hundreds of thousands of dollars; some towns have no trails or interesting paths for walking the dog or getting some time with nature. Pittsford has about 15 miles of trails that were built by volunteers at very low cost (and no expense to the Town) on privately owned land with landowner permission in the form of a "license". These trails are now under the Town Recreation Dept but are maintained by volunteers at a cost of just a few hundred dollars a year. New volunteers are always welcomed but anyone walking a trail can help by reporting large blow-downs obstructing a trail or other problems. Please call Bob Harnish, Trail Master, or Randy Adams, Recreation Director, with any reports or questions. If anyone has an idea of a route for a new trail, we are always willing to consider an addition to the trails system.

On one recent day on the Split Rock Trail there were two teenage girls having a picnic, two folks from Brandon walking their two dogs, a family from Maryland with a cottage in North Chittenden and a mother and daughter having some quality time together. Those of us active in maintaining and growing our trail system are pleased with the diversity of folks who use our trails.

Looking ahead, on September 29th there will be a run/walk to benefit the Visiting Nurse Hospice program utilizing the Chaffee Falls Trail. This will be a 6 K event beginning and ending at the Chittenden Grange in North Chittenden. Contact John Campbell at RAVNAH, 775-0568, for registration. Food and beverages provided at the finish.



PITTSFORD RECREATION DEPARTMENT EVENTS

LOTHROP BASKETBALL (Grades 5th & 6th)

This is a school-sponsored program where girls and boys will develop appropriate sportsmanship behavior. Learning the fundamentals of basketball from dribbling to passing and shooting will be highly stressed. During the season, teams may practice or play games 2-3 times a week. Each team will play a 10-12 game schedule. Actual practices will begin the first week of December.

DATES: December – February

WHERE: Lothrop School Gym

FEE: Free

This a school-sponsored program.



AEROBIC WORKOUT

This one-hour workout incorporates aerobic conditioning, strength and abdominal work. It's sure to help you begin to lose some of that extra weight, while increasing your energy level. Perhaps you'll want to focus on getting back into shape for the upcoming holidays. New and different routines are planned to keep the program fresh.

Sign up for an entire month or pay as you go.

WHEN: Tuesdays, October 9, 16, 23, & 30

TIME: 5:30 – 6:30 pm

WHERE: Lothrop School Gym

FEE: \$6 per class (pay as you go) or \$20 for all 4 classes

INSTRUCTOR : Joani Imperato,

Certified Kickboxing & Martial Arts Instructor

Bring a mat or towel to lie on & wear comfortable clothes.

CALL THE PITTSFORD RECREATION DEPARTMENT TO PRE-REGISTER & TO ANSWER ANY QUESTIONS YOU MAY HAVE. (802) 483-6500 ext. 17 or

Recreation@pittsfordvermont.com



PITTSFORD RECREATION ANNUAL CRAFT FAIR

THE PITTSFORD RECREATION DEPARTMENT WILL BE SPONSORING IT'S ANNUAL CRAFT FAIR AT THE LOTHROP SCHOOL GYM ON Saturday, November 17, 2012 from 10 AM to 3 PM.

TEEN NIGHTS (Grades 7th - 10th)

These teen nights are open to students in the Rutland Northeast Supervisory Union communities to come together in a fun and safe environment.

For the safety of all participants, the following precautions apply to all teen events: All participants must have a signed permission release form to attend these events (handwritten notes WILL NOT be accepted) and parents must enter the facility to sign their child(ren) in and out. If parents are allowing their child to drive to or from these events or their child will be riding with another student that is driving, please indicate this on the permission form.

DATES: Friday evenings...

Oct. 12 - Halloween Dance

Dec. 7 - Holiday Freeze Dance

Feb. 8 - Valentine's Day Dance

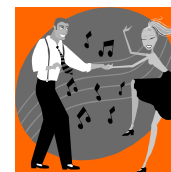
May 24 - Spring Fling Dance

TIME: 7:00 - 10:00 pm

WHERE: VT State Police Academy

FEE: \$3 per person

**The Brandon & Pittsford Recreation Departments sponsor all these events.*



WOMEN'S OPEN BASKETBALL

Do you enjoy playing basketball? Come join the fun of pick up basketball. Open court scrimmages will be held on Friday evenings and are open to players from Brandon, Pittsford, and surrounding communities.

WHEN: Fridays, beginning September 7th

TIME: 5:30 - 8:00 pm

WHERE: Vermont Police Academy Gym **FEE:** Free

MEN'S OPEN BASKETBALL

Here is another great opportunity to get off the couch and get a little exercise this fall!!! Open court scrimmages will be held on Sunday evenings, September through May, and are open to all players.

WHEN: Sundays, beginning September 2nd

TIME: 6:30 – 9 pm

WHERE: Lothrop School Gym **FEE:** Free





LOTHROP SCHOOL NEWS



Lothrop opened its doors this fall for the 100th year. We welcomed several new educators to our dedicated staff. Samantha Funk is our new music teacher, Stephanie Sherman is our new librarian and Dana DeWitt is our new upper grade reading specialist. On September 13th we had a very lively Open House. The students were so excited and proud to show their school to their families and friends.

We also welcomed Sharon Ladigo our new Pre-School teacher at Caverly. She has one class of fifteen 4 year olds and two classes of twelve 3 year olds. The children are all busy exploring the wonders of fall such as caterpillars, butterflies and apples. The 4 year old class is continuing their hiking program on Friday mornings.

During this 100th year of education at Lothrop Elementary School the entire staff will provide a variety of classroom and enrichment activities culminating in a June celebration. The first school wide activity began on September 20th with Jon Gailmor's song writing residency. Jon Gailmor is a well known Vermont singer and song writer. He met with all the classes twice and created songs, which the students performed in concert at Otter Valley on September 26th. We were very fortunate to have him help us kick off our Centennial Celebration.

Global awareness is important in the educational programs at Lothrop. Jan Ryan will be conducting a study of Africa this fall with an emphasis on the Ivory Coast countries where French is spoken. A giant National Geographic Map of Africa will be at Lothrop and will be tied into studies in French, music and art. There will be an art exhibition at Lothrop the week of December 3-7 and a drama presentation of African Folktales on Thursday evening, December 6th.

In order to keep up with all our year long activities please visit our new website, www.lothrop.rnesu.org. The Lothrop School Board's regularly scheduled meetings are held the first Tuesday of each month at 6:30 p.m. in the Lothrop Library. The upcoming meetings will be dealing with budgetary matters. We welcome community concerns and input.

Fire Hydrants Save Lives...

...They also can save homeowners money. One added benefit of the recently-completed water upgrade project is the increased number of fire hydrants with sufficient flows to tackle fires. Town residents with hydrants installed closer to their homes during the course of the water project would be wise to notify their homeowner's insurance carriers, especially in Florence as many fire hydrants were added in that area. There may be a substantial reduction in premium payments for homes with improved fire protection available. Be sure to keep fire hydrants free from snow by reminding snow removal contractors not to block the hydrants when they are plowing.



SCHOOL BUS SAFETY



School is back in session. That means that school buses are once again rolling through Town in the mornings and afternoons during the school week. It is therefore important for motorists to remember to take extra care when driving near school buses. Follow from a safe distance and always respect the stop signs activated by the bus drivers when they are picking up and dropping off schoolchildren. Let's show care out there for Pittsford's kids!

TRANSFER STATION RENEWAL PERMITS

Transfer Station permits for 11/1/12 to 10/31/2013 which are due for renewal before 11/1/12 are now available at the Municipal Town Office, 426 Plains Road. The permit fee is \$15.00 which includes a 10 bag (30 gal) punch card. Extra cards available: 10-bag card/\$20.00 at the Town Office via cash or check or at the **Transfer Station by check only**. 5-bag punch card/\$10.00 cash only available at Kamuda's Country Store or Keith's Country Store. **Residents must have new permit stickers by 11/1/12 in order to use the Pittsford Transfer Station.**

RUTLAND COUNTY SOLID WASTE DISTRICT HOUSEHOLD HAZARDOUS WASTE COLLECTION

Pittsford Transfer Station, Saturday, Oct. 27, 2012 from 12:00 PM to 3:00 PM.

Sewer System Upgrade Project

Many thanks to the residents of Arch and Pleasant Street and the surrounding neighborhood! We appreciate your patience as first water and then sewer lines were replaced. This was important work but we are aware that it caused many inconveniences, particularly to those living in the affected area. We look forward, now that work there is complete, to life returning to normal. Again, thank you !!!

Highway Paving Project

Many thanks to the residents of Depot Hill Road and the surrounding neighborhood! We appreciate your patience as the Town Highway crew reconstructed much of this important transportation artery. We can all agree that the road was in need of an upgrade. However, we are aware of the inconveniences that such a project can cause. Therefore, we wanted to thank all those affected by this important project. Now that the reconstruction and paving is complete, we can all enjoy a smoother, safer ride.

CHALLENGES KEEPING TOWN ROADS CLEAR

Winter will soon be upon us! As many residents already know, the Town's Highway Department has provided excellent service in years past, particularly when it comes to keeping Town roads free of snow and ice. A timely reminder to all: We live in Vermont at least in part to enjoy the beauty of the seasons. In wintertime, it snows, rains and ices. Snow and ice on Town roads is inevitable. While the Town's crew will continue to do its best to address the weather events to come, we would appreciate the patience and understanding of Town residents.

Reasonable expectations and a recognition of the power of mother nature will help us all get through the winter in good spirits.

Be safe out there!



PITTSFORD FOOD SHELF



October marks the 6th year the Pittsford Food Shelf has been housed at Keith's Country Store. Special thanks to Jon, Monica & Jona Keith for providing us this wonderful opportunity for the Food Shelf.

Also thank you to all who continue to donate your garden harvest to the Food Shelf. This has been an incredible year. Special thanks to Ground Works who continue to provide us with fresh veggies each week along with Dick & Barb Hammond. Thanks Barb for your delicious apple sauce. All veggies and fruits that come in each week go out the same week. Thank you all for your generosity. If you are picking apples maybe pick a few extra, we'd love to have some fresh apples for our clients.

Thank you to the girls of Camp Betsy Cox who help us every summer with Commodities and the Food Shelf. We are looking forward to your return next summer.

A special "thank you" goes out to Nancy Gaudreau who for the past 10 years has been doing the paperwork for our Commodity program. Good Luck Nancy with your new endeavors.

Effective October 1, anyone using the Food Shelf will need to recertify their eligibility. Please bring in your current utility bill for certification. Reminder the Food Shelf serves people in Pittsford, Proctor, Florence & Chittenden only.

October 28th at 2 PM will be the annual Volunteer Appreciation Day for the Food Shelf and Commodities. If interested call Robin at 483-2967 to RSVP.

Thanksgiving and Christmas are just around the corner and so is the holiday shopping. This year's holiday baskets' will be incorporated into the regular shopping and each family will receive a turkey or pork roast in addition to their monthly shopping. Appointments are needed for shopping in November and December. Appointments will be given the first two weeks of each month, then the Food Shelf will be closed for the remainder of the month so the volunteers can have time with their families.



Bags are always needed. Paper, plastic and cloth are used. Feel free to drop off you SMOKE FREE bags at the Food Shelf or Keith's Country Store by the entry to the Food Shelf.

Do you knit or sew or make crafts like hats, scarves or mittens? Donation of these items are always welcome. All sizes for all ages. Items can be dropped off at the Food Shelf.

Calendars— Do you receive 2013 calendars on a daily basis and don't know what to do with them? Drop them off at the Food Shelf and we'll pass them out to our clients.

Items needed: cranberry sauce, stuffing, canned fruit, cereal, peanut butter, frosting & brownie mixes and paper towels, toilet paper, canned and instant potatoes. Monetary donations are always welcome, too. You can drop them off at the Food Shelf Mondays, 9-11 AM; Tuesdays, 1-3 PM; Thursdays 4-6 PM or inside Keith's Country Store in the event the Food Shelf is closed. Please do not leave any donation on the outside door as critters will check out the donations before we might get them. You can also mail your monetary conations to Pittsford Food Shelf, P O Box 553, Pittsford, VT 05763.

Any questions or comments can be referred to Robin Rowe, Director at 483-2967.

PITTSFORD HISTORICAL SOCIETY



Our 52nd Annual Meeting will convene in Fellowship Hall of the Pittsford Congregational Church on US Route 7 and the Village Green on Sunday, October 21, 2012. A potluck supper begins the evening at 5:30 PM. Please bring a dish to share.

The Annual Meeting begins at 6:30 PM. Around 8:15, Julia Purdy, a free-lance writer in Rochester, VT, will give an illustrated talk titled "Ashes and Pears: the Saga of Potash in Early Vermont, or, Don't Blame It on the Sheep!" The big, rounded iron kettles people now use as flower planters are the "kittles" remaining from the era when potash was king. It was an early form of currency and paid for many a farmer's land. "Ashes and Pears" shows how fortunes were made-and lost-and how the potash boom-not sheep-was a major factor in the first wholesale clearing of the land. We'll also learn about the Black Snake, a smuggling vessel brought to trail for its part in defying the Jefferson Embargo of 1807. As a footnote, Julia will address the question: Was Samuel Hopkins really from Pittsford? Purdy's talk is open at no charge to anyone interested in the history of Pittsford. The Hall is ADA accessible. For details call the Museum: 802-483-2040 to leave a message or Peggy Armitage: 483-2108.

The first edition of our "Expanded Index to Caverly's History of Pittsford, VT" is out of print. Before reprinting it, we will add people, places and events missing in the old one. To reduce paper and costs, Stephen Belcher is adjusting the layout to allow more entries per page. Quickprint of Rutland will print it.

Stage one of weatherizing Eaton Hall will be done this year by Absolute Comfort, a Certified Home Performance with Energy Start Contractor in Middlebury. This portion of the \$16,222 project will install a new basement entry door, install rigid foam boards to top four of the leakiest doors and insulate and weather-strip the attic hatch cover. The cost is \$5,200, which is available, but rebates from Efficiency Vermont for lowering air infiltration by 10% and from the contractor for covering 820 sq. ft. of basement walls will reduce that sum by about \$1,100, while saving up to \$1,300 on annual fuel bills.

The Museum in Eaton Hall is open Tuesdays 9 AM to 4 PM and Sundays 1 to 4 PM through October 7, and thereafter Tuesdays only through mid-November before closing for the winter. However, we check phone message and e-mails often until reopening next Spring and we suggest visiting our website for updates: www.pittsfordhistorical.com.

LISTERS REPORT

Your Listers met recently with the district advisor from the Vermont Dept of Property Valuation and Review for the annual review of sales of property occurring during the past year. Among other things, she advised that we perform a street by street survey of the Town to check for changes in real property that are not reflected in the Grand List. This is an effort to be sure that all taxpayers are being treated equitably in our property valuation system.

Listers will also be visiting all properties that have building permits, particularly those projects that have been completed, to add these to the Grand List. We remind residents to check with the Zoning Administrator before making any changes to property and to advise the Listers of any change in mailing address.

"Sunshine Village"

Pittsford Town Office
P.O. Box 10
426 Plains Road
Pittsford, VT 05763

Bulk Rate #1
US Postage
PAID
Pittsford, VT 05763

VISIT OUR TOWN WEBSITE!

www.pittsfordvermont.com

PITTSFORD HAUNTED HOUSE

32nd ANNIVERSARY!!

Fridays & Saturdays

October 19 & 20, 2012

October 26 & 27, 2012

SOME NEW ATTRACTIONS!!

Family Fun for Everyone!

Ticket sales are 6:00PM to 9:00PM, which includes a wagon ride to the Haunted House.

Tickets are \$10 for adults & \$5 for children up to 12 years old.

Not recommended for children under 6. Parking is next to the Town Office, Plains Road, Pittsford. Follow the signs off U S Route 7.



Dates to Remember

Town Clerk/Treas. Office

Due 11/1/12 Transfer Station 1-yr. renewal permit- Available at Town Clerk's Office-more information pg. 6

11/6/12 Presidential Election, Tuesday, polls open 7:00 AM to 7:00 PM, Pittsford Municipal Office, 426 Plains Road, Pittsford

11/09/12 Property Taxes Due Friday 8AM to 3PM
Postmarks are **NOT** accepted.

Drop box available 24-hr. located at the parking lot exit. Questions? Call 483-6500 Ext. 11 or 13.

The Town Office is open 11/12/12, Veteran's Day.

Municipal Town Office will be closed on the following holidays:

| | |
|------------------------|-----------------------------|
| October 8, 2012 | Monday, Columbus Day |
| November 22 & 23, 2012 | Thurs. & Fri., Thanksgiving |
| December 25, 2012 | Tuesday |
| January 1, 2013 | Tuesday |

Transfer Station Open: Saturdays 12/22 & 12/29/12
Regular hours 9AM to 3:15PM