

MUNICIPAL OFFICE HOURS:

Mon. through Wed.
8-4:30

Thursday
8-6

Friday
8-3

After Hours Use Drop Box at Exit

Phone:
802-483-6500



IMPORTANT ITEMS FOR TOWN MEETING & GENERAL ELECTION WEEK

Town Meeting is at the Lothrop School Gym on Monday, February 29, 2016 at 6:30 PM.

Town Meeting & General Election is on March 1, 2016, with voting hours from 7 AM to 7 PM at the Municipal Office, 426 Plains Rd., Pittsford, VT.

The Town of Proctor has accepted Pittsford Town Manager John Haverstock's Food Drive challenge for March 1-April 30, with donation boxes available at Town Meeting, February 29 and at the General Election, March 1. Over the past several years, Pittsford and Proctor have engaged in a friendly competition to see which Town can collect the most cash and non-perishable food items for contribution to the Pittsford Food Shelf, which serves residents of Pittsford, Florence, Proctor and Chittenden. Let's challenge ourselves as Pittsford residents to contribute what we can. Please bring items to the Town Meeting on February 29th at the Lothrop School Gym or to the Pittsford Municipal Town Offices, where there will be food donation boxes in the front lobby. Thank you for supporting this worthy cause.



Town Meeting & General Election 1
Rec Dept New Programs- Pickleball
5k & 1 mile Trail Run
Pittsford Plunge

Budget Summary 2

Listers 3
Hazardous Waste Dates
Dog Ownership Rules
Handicapped Access
Historical Society
Emergency Management Coordinator

Pittsford Senior Luncheon 4
Recreation Dept Important "Save the Dates"

Pittsford Recreation: 5
Family Fun Night
Teen Nights
Open House TBA
Middlebury Ski Program
Kickboxing & Aerobic
Baseball/Softball
Fun Day School Break

Maclure Library 6
Fire Hydrants
Town Roads

Utility Bills Due 2/4/16 7
Pittsford Food Shelf
Lothrop School Directors Board Meeting Dates

Dates to Remember 8
Dog Licenses Due

NEW PITTSFORD RECREATION DEPARTMENT SPONSORED PROGRAMS

PICKLEBALL is played both indoors and outdoors on a badminton size court and a slightly modified tennis net. It is played with a paddle and plastic ball. A small group from Pittsford began playing this summer on a tennis court in Rutland. Now they're continuing through the winter inside at the Lothrop School Gym. Free, Free & Free. Sundays, beginning Jan. 17th, pickleball will be held in the Lothrop School gym from 8:00AM-12:00PM.

PITTSFORD TRAIL RUN 5K & 1 MILE AT THE PITTSFORD RECREATION AREA will be held on **Saturday, April 30, 2016**, rain or shine. Pre-registration is \$10 for the 5k and \$5 for the 1 mile. Registration on race day is \$15 for the 5k and \$10 for the 1 mile. Prizes for finishers to be awarded by age group with prizes courtesy of local businesses. Volunteers are needed for race day. Join us on the beautiful Pittsford trails at the Recreation Area for a 5k and 1 mile run/walk to benefit the Pittsford Recreation Department. For more information on race routes and registration, contact Randy Adams, Recreation@pittsfordvermont.com or 483-6500 ext 17 or Kelly Connaughton, kfield16@yahoo.com or 483-6351.

Pittsford Plunge!!!

The Pittsford Plunge is back for 2016. The Recreation Department is running the 2nd annual Ice Out Competition on the pond in front of the New England Maple Museum. People can now purchase tickets to guess when the Scarecrow will fall through the ice. Tickets are \$1 each or six tickets for \$5 and are available at the Town Offices or from Recreation Committee members, the Recreation Director, Jay Blanchard at Pittsford Auto and Jill Blanchard. The deadline to purchase tickets is Friday, March 11, 2016.

During the winter of 2015 the Recreation Department sponsored the first annual Pittsford Ice Out Competition! A Scarecrow dressed up as a Pittsford youth baseball player fell through the ice on the pond in front of the New England Maple Museum on Friday, April 3 at 1:45:05 pm. The Winner was Joyce Robinson with her guess of 1:40 pm. On that day. She received a check in the amount of \$527.50. The Recreation Director would like to thank Mike Blanchard and his entire family, for their help and support with the fundraiser.

FY 2015/2016 BUDGET SUMMARY

GENERAL FUND REVENUES	Budget FY15	Actual FY15	Budget FY16	Budget FY17
TAXATION	966,113	905,737	1,031,883	1,084,320
FEES/PERMITS & LICENSES	35,350	25,831	30,200	25,400
INTERGOVERNMENT REVENUE	75,800	75,884	81,000	79,200
FEE/CHARGE FOR SERVICES	700	347	400	400
SOLID WASTE	52,000	45,370	49,000	46,000
MISCELLANEOUS RECEIPTS	26,380	19,816	27,100	31,500
RECREATION	44,085	46,623	46,700	50,095
ANIMAL MANAGEMENT REV	6,600	4,758	6,600	6,100
POLICE DEPT	81,800	87,217	103,300	23,650
FIRE DEPARTMENT	0	3,420	0	0
TOTAL GENERAL FUND REV	1,288,828	1,215,003	1,376,183	1,346,665
GENERAL FUND EXPENSES	Budget FY15	Actual FY15	Budget FY16	Budget FY17
LEGISLATION EXPENSE	14,750	15,795	15,000	16,000
MANAGEMENT EXPENSE	155,000	185,185	181,900	184,600
ELECTIONS EXPENSE	6,560	7,223	4,850	9,050
FINANCE-CLERK/TREASURER EXPENSE	142,470	139,544	142,050	140,050
ADMINISTRATION EXPENSES	95,200	81,731	87,800	93,700
AGENCIES EXPENSE	5,445	5,213	5,600	5,440
ZONING EXPENSES	19,680	15,398	20,000	18,240
PLANNING COM EXPENSES	7,300	4,942	7,200	8,900
BCA EXPENSES	2,860	1,663	2,350	4,100
PLANT & EQUIPMENT	43,900	38,185	45,000	45,000
FIRE WARDEN EXPENSES	2,200	779	1,800	1,300
MISCELLANEOUS LISTERS' EXPENSES	4,800	9,580	4,800	4,100
HEALTH OFFICER EXPENSES	48,700	40,574	42,600	45,400
SPECIAL APPROPRIATIONS	11,705	622	11,150	10,600
SOLID WASTE/RECYCLING	128,888	128,888	146,138	150,238
FIRE HYDRANT EXP	80,280	79,273	80,050	85,250
POLICE DEPARTMENT	0	35,000	35,000	0
FIRE DEPARTMENT	154,500	151,868	160,600	127,150
RECREATION DEPARTMENT	178,250	183,396	183,900	191,800
ANIMAL MANAGEMENT	166,490	174,292	169,370	173,385
DEBT SCHEDULE/FIXED CGS	7,950	5,018	7,125	7,462
TOTAL GENERAL FUND EXPENSES	1,300,928	1,328,514	1,379,183	1,346,665

LISTERS OFFICE

VETERANS EXEMPTION Veterans who are residents of Pittsford with a disability of 50% or more, are entitled to a \$40,000 exemption off the assessed value of their property for tax purposes. Those veterans should receive a letter and form from the Office of Veterans Affairs which should be signed and returned. If a veteran is qualified but has not received a letter, we suggest a call to the VA office at 802-828-3379. Application forms are also available at the Town Office or on the State web-site: state.vt.us.gov.

HOMESTEAD DECLARATION All homeowners whose legal residence is Pittsford are required to file the Homestead Exemption (HS-122). Tax Forms can be obtained at on-line at state.vt.us.gov/tax or call 802-828-2505. Late filing will be accepted through October 15, but a late filing **penalty will apply** after April 15th.

GRIEVANCE All property owners will receive a letter regarding the grievance procedure for their parcel.

TOWN-WIDE APPRAISAL Vision Government Solutions, Inc. is completing Phase I (Data Collection) of the revaluation project. Four additional phases include Market Analysis, Valuation, Field Review, and Informal Hearings. Project completion is set for July 1, 2016. Also, we would like to thank Darren Laughlin & his son who volunteered their time to drive the Fire Dept. Ranger to a remote camp for appraisal.

Any questions about the items above or any matter regarding valuation of property in Pittsford will be promptly answered by calling the Listers Office at 802-483-6500 ext 15.

HOUSEHOLD HAZARDOUS WASTE RURAL COLLECTION 2016 SCHEDULE

Pittsford Transfer Station, Saturdays 12:00 PM to 3:00 PM on May 14, July 9, and October 22, 2016.

Gleason Road HHW Depot in Rutland will be open 7 AM to 3 PM on these Saturdays: April 2, May 7, June 4, July 2, August 6, Sept. 3, and Oct. 1. These dates are in addition to their regular hours.

DOG OWNERSHIP RULES

The Town learned during its recent "dog census" that many dog-owners weren't familiar with the laws regarding dog ownership in Town. For example, did you know that all dogs must be registered with the Town each year? Did you know that dog owners must provide evidence of rabies vaccinations for each dog, as well? Did you know that dog owners must keep their dogs on their own property or under physical or voice control at all times?

Some of these rules are simply good manners and designed to keep the peace in your neighborhood. Others are matters of public health and safety. All are spelled out in detail in the Town's Animal Ordinance, a copy of which is posted online at www.pittsfordvermont.com.

Thanks for playing by the rules!

Dog Licenses due April 1, 2016 & are now available at the Town Offices, 426 Plains Road--see back cover of this newsletter.



HANDICAPPED ACCESS

The Town is pleased to announce that it has improved ingress and egress at the Town Offices and that it has made the building more handicapped-accessible, by installing push-button doors at the building's entrance and by replacing the crumbling sidewalk and entryway with new concrete. There is also now a dedicated exit door in the Conference Room (where voting takes place), with a sloped ramp leading back to the sidewalk, so that there is a smoother flow of voters during elections. We hope you like these improvements.

PITTSFORD HISTORICAL SOCIETY

The PHS Museum, Eaton Hall, is closed for the winter and will re-open in April. It can be visited by arrangement; please contact the Curator, Anne Pelkey (802-483-2040 or 802-483-6178) or Steve Belcher (802-483-2852) for an appointment. We will be setting up our schedule of presentations in the coming months. Other information is available on our web-site: www.pittsfordhistorical.com.

EMERGENCY MANAGEMENT DIRECTOR

The Town welcomes its new Emergency Management Director, Jason Davis.

Jason has been active for many years with the Pittsford Fire Department. His background, knowledge, energy, enthusiasm and attention to detail will make him an excellent Emergency Management Director.

Jason's contact information is as follows:

345.0067 (primary cell number)

747.8184 (secondary cell) 483.2812 (home landline)

jdproduction@comcast.net

Please feel free to contact Jason to discuss emergency management.

On the topic of emergency management, have you or your family developed its own emergency plan and assembled supplies to withstand an emergency? Give these matters some thought, so that you are ready to cope in the event of an emergency!

Do you wish to receive reliable information regarding emergency situations (severe weather, traffic conditions, public health notifications, missing person alerts, etc.) from state and federal agencies and local first-responders? You can get personalized alerts via phone, text or email by signing up at www.vtalert.com.

Pittsford Senior Group Luncheon Menu 2016

***Per the request of the VT POLICE ACADEMY, Seniors arriving for luncheons should NOT arrive before 12:45 pm!! Thank you.**

<u>Luncheon Date:</u>	<u>MENU:</u>	<u>MUST RSVP</u>
February 25	Ranch Baked Chicken, Wild Rice Pilaf & Cherry Pie	Feb. 16
March 24	Lasagna, Garlic Bread, Salad Bar & Carrot Cake	March 15
April 21	Pot Roast, Mashed Potatoes & Apple Crisp	April 12
May 26	Mac & Cheese, Veg. Beef Soup & Pumpkin Citrus Bars	May 17
June 23	Baked Ham, Potato Salad, Corn & Choc. Cream Pie	June 14
July 21	BBQ (chicken, hamburgers, hot dogs), Baked Beans, Tapioca	July 12
Aug. 25	Salad Plate: Chicken Salad, Veg. Pasta Salad, Beets & Cookies	Aug. 16
Sept. 22	Spaghetti w/Meatballs, French Bread, Green Beans & Apple Pie	Sept. 13
Oct. 27	Apple-Braised Pork , Pea Soup, Fried Rice & Macaroon Cupcakes	Oct. 18
Nov. 10	Roast Turkey, Stuffing, Mashed Potatoes, Squash & Pumpkin Pie	Nov. 1
Dec. 15	Roast Beef, Twice Baked Potatoes, Green Beans, Christmas Cookies	Dec. 6

A salad bar is included. All foods are homemade including the soup, bread and desserts.

Suggested donation of \$5.00 for 60 and up. Must pay \$6.00 if under age 60.

Reservations are Necessary! All luncheons are on Thursdays, unless otherwise posted, at 1:00 PM at the Vermont Police Academy in Pittsford. If you have any questions or would like to RSVP, please contact Randy Adams 802-483-6500 ext 17 or Recreation@pittsfordvermont.com.

SAVE THE DATES: PROGRAMS SPONSORED BY RECREATION DEPT.

Saturdays, March 19 & April 2, 2016 Safe Sitter Babysitting Course to be held at the Lothrop Elementary School Cafeteria from 9:00 AM-4:00 PM for 11-13 year old students. The cost is \$60.00 for the course. Register early with Randy Adams 483-6500 x17—space limited.

Saturday, in April TBA Start time 11:00 AM Bike Rodeo at the Pittsford Recreation Area

Bring your bicycles for bike registration—Pittsford Police Department Bike Helmet Giveaways & Free Lunch

Saturday, May 7, 2016 Green Up Day Contact Randy Adams, Recreation Director, for road sign-up & clean-up bags

Summer Day Camp 6-week programs will begin the end of June-starting date TBA in Spring newsletter

Accepting applications for Day Camp Director-due 2/26/16

Swimming Lessons end of June-starting date TBA in Spring newsletter

Accepting applications for Swimming Area Supervisor-Swim Instructor-due 2/19/16

Accepting applications for Red Cross Lifeguards (Season runs approx. Memorial Day - Labor day)-due 4/8/16

More information will be in the Spring Town Newsletter or on the Town’s website: www.pittsfordvermont.com. Submit applications to Randy Adams, Recreation Director, at Recreation@pittsfordvermont.com or 483-6500 ext 17 or P O Box 10, Pittsford, VT.

Applications and job descriptions can be found online on the Town’s website www.pittsfordvermont.com.

PITTSFORD RECREATION DEPARTMENT EVENTS

FAMILY FUN NIGHTS

The Pittsford Recreation Department and the Maclure Library are teaming up again to offer FAMILY FUN NIGHTS during the winter months. Each Fun Night is full of fun, which includes art and crafts, physical activities and entertainment. Don't miss out.

DATE: Friday, February 5 (Pirates of Pittsford) & Friday, March 4 (Theme TBA)

LOCATION: VT POLICE ACADEMY

Activities are intended for children 3rd grade or younger. Older siblings are invited to attend, but we will ask them to help with activities & crafts.

TIME: 6:30 – 8:00 pm **FEE:** Free

TEEN NIGHTS (GRADES 7-10)

Teen Nights are a great way for young people in the Pittsford & Brandon communities to get together in a fun and safe environment. Each "Teen Night" event is chaperoned by parents & volunteers. Fee: \$3 per person. Time: 7-10 PM

March 18 March Teen Dance at the **VT Police Academy**

"Mystery Theme Night"

Offered in conjunction with the Brandon Rec. Dept.



CARDIO-KICKBOXING & AEROBIC WORKOUT

This one-hour workout incorporates aerobic conditioning, strength & leg training and abdominal work. The cardio-kickboxing portion is a dynamic, low/high impact aerobic workout combining boxing techniques that strengthen the upper and lower body, with punches, jabs, and kicks.

WHEN: EVERY WEDNESDAY EVENING-No class 2/10

INSTRUCTOR: Joani Imperato

WHERE: Lothrop Gym **TIME:** 5:30 – 6:30 pm

FEE: \$6 per class (pay as you go) or \$35 for 6 weeks

Bring a mat or towel to lay on & wear comfortable clothes.



OPEN HOUSE SATURDAY, JUNE 18, 2016

Open House at the Recreation Area. Free day of activities-details to come in the Town Spring Newsletter and on the Town website.

SKI/SNOWBOARD PROGRAM @ THE MIDDLEBURY COLLEGE SNOW BOWL!!!

The Pittsford & Brandon Depts. are co-sponsoring a Ski/Snowboard Program. This program is being held at the Middlebury Snow Bowl on four Sunday mornings from March 6-27 and consists of four 1-hour lessons and half day tickets. Group lessons will include other students of similar skill. **DEADLINE** for returning completed registration forms and payment to the Pittsford Recreation Dept. is **FRIDAY, February 12, 2016**. Children must be in at least the 1st grade in order to participate (for safety reasons, children in grades 1-3 must be accompanied on the bus by an adult). The Rec. Depts. will provide a bus for transportation from Otter Valley Union High School each Sunday. All participants who sign-up for this program will be required to commit to using the transportation. The bus fee is included in the price of the program and there are no refunds for missed weeks. A minimum of 20 participants will be needed & the maximum is 30 participants, on a first come/ first served basis. Fee schedule & to register, contact Randy Adams, Pittsford Recreation Director, 483-6500 ext 17 or

Recreation@pittsfordvermont.com. Info on the Town website: www.pittsfordvermont.com



YOUTH BASEBALL/SOFTBALL REGISTRATION

Registration for any boy or girl who is interested in playing T-Ball, Mighty Mites, Minors and Majors Little League or Girls Softball this spring can be done with the Recreation Director at the Pittsford Municipal Offices Monday – Friday beginning March 1st. Registration forms will be ready and sent home through Lothrop Elementary School by the end of February. **The last day to register is Thursday, March 31, 2016!** After this date, kids will be placed on waiting lists.



SCHOOL BREAK FUN DAY: (Pre 1st—6th Grade)

Does your child have cabin fever? Would you like to give your child something productive to do during the February Winter Vacation? Have your child join the Pittsford Recreation Department for a very cool field trip. The first part of the day, the group will enjoy indoor climbing w/Steve & his staff at the Green Mountain Rock Climbing Center in Rutland. There, they will learn the proper techniques it takes to be a safe and reliable climber. *****Parents must complete a digital waiver online at www.vermontclimbing.com BEFORE your child can participate!!!*****

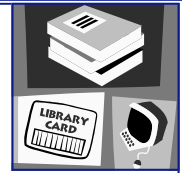
After a morning of invigorating exercise, our group will go to VAC (Vermont Achievement Center) to indulge in an afternoon of swimming. Under the watchful eye of Ann Hunt, our participants will enjoy open swim time in the heated Mitchell Therapy Pool! Call early. This program was FILLED last winter! **DATE: Wednesday,**

February 17, 2016 TIME: 10:00 am – 3:00 pm Bus Departure Time: Lothrop School—9:30 AM

WHERE: Green Mt. Rock Climbing Ctr./VAC Mitchell Pool FEE: \$29



MACLURE LIBRARY



We try hard to offer the very best, but we can't help but wonder how we're doing? What improvements and services would you like to see at your community library? We'd like you to think about it, so when our survey arrives in the mail you can tell us your ideas and suggestions.

A Friendly Reminder

Every resident has access to the services your community library offers.

Besides the expected, like a free library card, books, movies, computers, audio and eBooks. We also have 24-hour free internet access available from the library parking lots.

No password needed! You only need to accept the internet policy and you're in! PS... download large files at the library – our fiber is super-fast.

Looking for homework help –Reference Page on our website.

Research paper for high school or college – Check out Vermont Online Library

Need to fix the brakes on your car – Search Chilton Library in Vermont Online Library

Traveling or vacation time – Download an audio or eBook from Listenup Vermont

Looking for a job – Career Transitions in Vermont Online Library

Starting a home business – Small Business Resource in Vermont Online Library

Medical questions – Health and Wellness Resource in Vermont Online Library

Learn a new language – Check out Listenup Vermont & Vermont Online Library

All you need is your free library card and internet access, because we have trusted sources you can download, listen to, or print. Our information resources will help you learn something new!

Speaking of learning something new, you should try out *Universal Class*, an educational service providing high quality online courses to any Vermonter. Did we mention it's free? Choose from over 500 self-paced courses from your own home – for free.

You will find this and more on the Maclure Library homepage, maclurelibrary.org.

Just a few databases to be found at Vermont Online Library (VOL):

Career Transitions

A career guidance center that walks users through the job-search process from beginning to end.

ChiltonLibrary.com

The most authoritative automotive repair information available to car owners.

LegalTrac

Included are articles on Federal and State Cases, Laws and Regulations, and Taxation.

Powerspeak Languages

Learn a language for travel, business, or personal enrichment.

Small Business Resource Center

Learn how to start, finance or manage your small business.

Go to maclurelibrary.org, scroll down the home page and click on *Vermont Online Library*. You will need a password, call 483-2972 for passwords or any questions you might have. Hope to see you soon.

Fire Hydrants Save Lives...

...They also save homeowners money. One added benefit of the water upgrade project is the increased number of fire hydrants with sufficient flows to tackle fires. Be sure to keep fire hydrants free from snow by reminding snow removal contractors not to block the hydrants when they are plowing. Also, please do not plow snow into the road.



CHALLENGES KEEPING TOWN ROADS CLEAR

Winter is upon us! As many residents already know, the Town's Highway Department has provided excellent service in years past, particularly when it comes to keeping Town roads free of snow and ice.

A timely reminder to all: We live in Vermont at least in part to enjoy the beauty of the seasons. In wintertime, it snows, rains and ices. Snow and ice on Town roads is inevitable. While the Town's crew will continue to do its best to address the weather events to come, we would appreciate the patience and understanding of Town residents.

Reasonable expectations and a recognition of the power of mother nature will help us all get through the winter in good spirits. Be safe out there!

REMINDER—UTILITY PAYMENTS DUE THURSDAY—2/4/16

PAYMENTS MUST BE **RECEIVED** AT THE TOWN OFFICES BY **2/4/16** TO AVOID PENALTY AND INTEREST CHARGES. **POSTMARKS ARE NOT ACCEPTED.**

LOCATED AT THE TOWN OFFICES IS A DROP BOX . IT IS AT THE FRONT PARKING LOT EXIT ON THE LEFT SIDE. PAYMENTS CAN BE LEFT IN THE DROP BOX 24/7. THE BOX IS CHECKED EVERY BUSINESS DAY AT 8:00AM. PLEASE MARK ACCOUNT NUMBER/UTILITY BILL ON CHECKS. If you wish a receipt mailed to you, please state so.

A correction from the Fall Newsletter: The Pittsford Post Office sends all mail received at the Post Office to White River Jct., Vermont for sorting.

PITTSFORD FOOD SHELF

PITTSFORD, PROCTOR, FLORENCE & CHITTENDEN

The Pittsford Food Shelf is Open Mondays 9-11.

Thursdays 4-6. We are closed holidays. To use the Food Shelf you must be a resident of Pittsford, Proctor, Florence or Chittenden and show proof with a utility bill.

March thru April 2016 will be our annual fundraiser. Letters will be going to each household that is in our service area. Your donations are very important to us as we receive no other funding. We are a 501c3 non-profit agency. We have NO paid positions. We are all volunteers. If we meet our goal of \$30,000 then the Food Shelf will not do any other fundraisers throughout the year. If we don't make our goal then we will have no other option but to have additional fundraisers. We know how valuable your time is as well as ours. So help us make this a onetime event.

With your money we purchase items like milk, eggs, butter, cereals, meats, canned goods, peanut butter & jelly, crackers, puddings etc. Your donations are making a huge difference in our communities.

One thing we need to remember is that hunger does not discriminate. We are all one step away from needing help. That one catastrophic event can cripple a family. It doesn't matter what type of car we drive or the house we live in. Lose a job, have a medical issue or being on disability and not be able to make ends meet. Our elders need extra help with rising cost of medications. Who wants to choose between food or medical necessities or a roof over your head. Let's help our neighbors in need today because we don't know when our time will be to need assistance.

Special thanks go out to those of you who donate eggs. What a blessing and savings to us.

Thank you to all who donate in whatever form it may be. You are making a difference.

If you are interested in a tour of the food shelf or volunteering, please give Robin a call at 483-2967 (h) or 558-5768 (Cell).

Visit our Town website
www.pittsfordvermont.com

LOTHROP SCHOOL BOARD

The Lothrop School Board has just completed its work on the 2016-2017 school budget. The budget approved by the Board is .09% less than last year. The resulting tax rate will be \$1.59, down \$.10 from last year's rate of \$1.69. Depending on the outcome of the Act 46 school governance vote, this rate could drop slightly.

Act 46, the new Vermont school governance law, was the focus of much of the Board's work during the fall. Sue Markowski, Board Member, Jennifer Cyr Tinsman and Craig Pelkey, Community Members and myself served as Pittsford's representatives to the Act 46 Study Committee. The study committee was comprised of board and community members from all of the Rutland Northeast Supervisory Union (RNESU) communities. Throughout the fall, the study committee worked with a consultant to better understand Act 46 and its potential impacts on local communities. As this work was taking place, the committee continually sought input from community members. A number of forums were held to share information and keep community members informed of the progress of the study committee. In November, the study committee unanimously recommended that RNESU communities to vote on this recommendation.

In March of 2015, Pittsford voters approved funding to install a new pellet boiler system and make other improvements to the school heating system. The bulk of this work was completed last summer and the system is working well. Final adjustments are being made to the system now that it is operational and providing heat to the school. This project was a significant improvement to the infrastructure of our school building.

In closing, I would like to thank the community of Pittsford for its continued support of our school. I speak for all of the Board when I say that we welcome your input as we do our best to support our youngsters' learning.

Bonnie Bourne, Chair, Lothrop School Board

THE PITTSFORD SELECT BOARD

Meetings are on the first and third Wednesday of each month at 6:30 PM at the Town Office Building, 426 Plains Road.

THE WATER & SEWER COMMISSION

Meetings are on the third Tuesday of each month at 6:30 PM at the Town Office Building, 426 Plains Road.

THE PLANNING COMMISSION

Meetings are on the fourth Thursday of each month at 7:00 PM at the Town Office Building, 426 Plains Road.

Changes to these meetings will be posted on the Town website and posted at the Town Office, Pittsford Post Office and Keith's Country Store.

"Sunshine Village"

Pittsford Town Office
P.O. Box 10
426 Plains Road
Pittsford, VT 05763

Bulk Rate #1

US Postage

PAID

Pittsford, VT 05763

DATES TO REMEMBER

Water & Sewer Bills were mailed on December 30, 2015. Payments are due **February 4, 2016**. Postmarks are not accepted. There is a payment drop box available 24/7 on the left side at the exit from the front parking lot at the Town Offices at 426 Plains Road.

Town Municipal Offices closed Monday, 2/15/16, Presidents' Day

Pittsford Annual Town Reports will be mailed to registered voter families. Extra copies will be available at the Town Offices and will be available on the Town's website.

ANNUAL TOWN MEETING—Monday, FEBRUARY 29, 2016 LOTHROP SCHOOL GYM 6:30PM.

GENERAL ELECTION—Tuesday, MARCH 1, 2016 POLLS OPEN 7AM—7PM MUNICIPAL OFFICES, 426 PLAINS RD., PITTSFORD, VT.

FOOD DRIVE Challenge with Town of Proctor for the PITTSFORD FOOD SHELF— will be held March 1-April 30, 2016. DONATION BOXES WILL BE AT THE TOWN MEETING FEBRUARY 29 & MARCH 1—PLEASE BRING MONEY (CHECKS PAYABLE TO PITTSFORD FOOD SHELF) CANNED GOODS & NON PERISHABLES. THANK YOU.
TOWN MANAGER JOHN HAVERSTOCK

DEADLINE FOR SPRING TOWN NEWSLETTER is 4/15/16. Send articles to Linda Drummond at asst2manager@pittsfordvermont.com

DOG LICENSES DUE APRIL 1, 2016

Please note that dog licenses are now available at the Pittsford Town Clerk's Office. All dogs must be registered by **April 1st**. In order to register your dog, you must give the Town Clerk a copy of the most recent rabies vaccination certificate. Your veterinarian always gives you two copies, one for your files and one for our files. If you are unsure whether your dog's rabies certificate is up to date, please call your veterinarian or us at (802) 483-6500 Ext. 10, 11, 12, or 24. The fees to register your dog(s) are as follows:



	Fee by April 1 st	Additional Fee After April 1 st
Female Spayed	\$9	\$2
Male Neutered	\$9	\$2
Female Not Spayed	\$13	\$4
Male Not Neutered	\$13	\$4

Any person who sells or exchanges or who offers to sell or exchange cats, dogs, or wolf-hybrids, or any combination thereof, from three or more litters of cats, dogs, or wolf-hybrids in any 12-month period will need a Pet Dealer License. The fee is \$25.00. Kennel permits are now obsolete.

DOG LICENSE REMINDER—DOG TAGS ARE IN. DOGS ARE REQUIRED TO BE LICENSED EACH YEAR WITH THE TOWN BY **APRIL 1, 2016**. **Don't wait until the last day.** A rabies certificate is required. If you haven't already registered your dog, please stop by the Town Clerk's Office **BEFORE APRIL 1, 2016**.