

"Sunshine Village"

Town of Pittsford Newsletter

MUNICIPAL

OFFICE HOURS:

Mon. through Wed.
8-4:30

Thursday
8- 6

Friday
8-3

After Hours Use Drop Box at Exit

SCHOOL VACATION FUN DAY February 18, 2009
Pre 1st—6th Grade

Does your child have cabin fever? Would you like to give your child something productive to do during the February Winter Vacation? Have your child join the Pittsford Recreation Department for a very cool field trip. The first part of the day, the group will enjoy indoor climbing w/Steve & his staff at the Green Mountain Rock Climbing Center in Rutland. There they will learn the proper techniques it takes to be a safe and reliable climber. After a morning of invigorating exercise, our group will go to VAC (Vermont Achievement Center) to indulge in an afternoon of swimming. Under the watchful eye of Kathy Corey, our participants will enjoy open swim time in the heated Mitchell Therapy Pool! Call early, this FILLED last winter!

DATE: Wednesday, February 18, 2009 TIME: 10:00 am – 3:00 pm
WHERE: Green Mt. Rock Climbing Ctr./VAC Mitchell Pool
FEE: \$16



<i>Fun Day</i>	1
<i>LEGO Contest</i>	
<i>Winter Celebration</i>	
<i>Budget Summary</i>	2
<i>Maclure Library</i>	3
<i>Junior Grange</i>	
<i>Otter Follies Talent Show</i>	
<i>Pittsford Seniors Luncheon</i>	4
<i>AARP Safe Driver</i>	
<i>Pittsford Historical Society</i>	
<i>Pittsford Recreation</i>	5
<i>Rock Climbing</i>	
<i>Pittsford Day Committee</i>	
<i>Safe Sitter Babysitting</i>	
<i>Kickboxing & Aerobic</i>	
<i>Baseball/ Softball</i>	
<i>Teen Nights</i>	
<i>Mosquito District & Cost</i>	6
<i>Water & Sewer News</i>	
<i>Pittsford Food Shelf</i>	7
<i>Planning Commission</i>	
<i>Lothrop School Directors</i>	
<i>Newsletter Deadline</i>	8
<i>Rabies Clinic</i>	
<i>Dates to Remember</i>	

Maclure Library's First Annual Lego Building Contest

Calling all aspiring Lego builders! Join our First Annual LEGO Contest. Judging & prizes will be held on Wed., February 18, 2009. Creations must be entirely original.

Prizes for: Best in Show, Most Original, and 1st, 2nd, 3rd in age group

Enter in one of the following three categories: Ages up to kindergarten, Grades 1-3, Grades 4-6

Complete guidelines and entry forms are available at the Maclure Library or for more information call 483-2972.



7th ANNUAL WINTER CELEBRATION 2009

Join the Pittsford Recreation Department and the Pittsford Trails Committee for the 7th Annual Winter Cross Country Skiing, Snow Shoeing & Sledding event. Enjoy guided tours and great snow conditions with family and friends. There will be a bonfire, hot chocolate and tasty treats for all to enjoy.

WHEN: Saturday, February 28th
WHERE: Cadwell Trail of the Pittsford Trails Network (Located on Elm St. 0.6 miles from Kamuda's Market)
TIME: 1:00 PM
FEE: Free, Free, Free...



FY2009/2010 BUDGET SUMMARY - GENERAL FUND REVENUE

	Budget FY08	Actual FY08	Budget FY09	Budget FY10
TAXATION	885,437	907,264	936,418	973,613
FEES/PERMITS & LICENSES	24,100	30,400	27,075	30,400
INTERGOVERNMENT REVENUE	25,800	37,900	29,800	35,600
FEE/CHARGE FOR SERVICES	57,850	60,933	66,000	82,500
MISCELLANEOUS RECEIPTS	23,100	41,172	23,200	36,425
RECREATION REVENUE	36,625	39,506	39,125	40,130
ANIMAL MANAGEMENT REVENUE	4,300	4,597	4,300	4,675
CONSTABLES	18,100	15,508	18,100	14,200
TOTAL GENERAL FUND REVENUE	1,075,312	1,153,655	1,144,018	1,217,593

GENERAL FUND EXPENSE

	Budget FY08	Actual FY08	Budget FY09	Budget FY10
LEGISLATION	10,000	8,103	10,000	9,500
MANAGEMENT	94,361	102,019	97,393	100,243
ELECTIONS	3,900	3,717	3,900	4,150
FINANCE	105,062	83,908	108,556	114,607
ADMINISTRATION	95,912	93,759	95,880	102,349
BOARDS AND AGENCIES	34,590	21,598	36,160	35,760
PLANT AND EQUIPMENT	37,561	37,670	37,061	57,113
FIRE WARDEN	-	-	-	1,720
UNBUDGETED	6,600	7,041	6,600	5,650
PITTSFORD FIRST RESPONSE	10,750	10,750	10,750	10,750
CONSERVATION	1,646	1,024	1,896	746
SPECIAL APPROPRIATIONS	86,099	84,493	93,219	93,069
SOLID WASTE/RECYCLING	112,386	111,947	118,730	120,095
CONSTABLES DEPARTMENT	74,700	73,342	81,286	83,655
FIRE DEPARTMENT	153,628	168,499	168,220	172,002
WATER HYDRANT EXPENSE	-	-	22,360	22,360
RECREATION DEPARTMENT	102,674	108,692	105,154	114,297
ANIMAL MANAGEMENT	6,947	5,994	7,002	7,471
RUTLAND COUNTY TAX	37,259	32,474	30,600	33,000
EMPLOYEE BENEFITS & INS	101,237	96,949	109,251	129,056
TOTAL GENERAL FUND EXPENSES	1,075,312	1,051,978	1,144,018	1,217,593

FY2009/2010 BUDGET SUMMARY - HIGHWAY FUND REVENUE

Account	Budget FY08	Actual FY08	Budget FY09	Budget FY10
HIGHWAY				
HIGHWAY ACCESS PERMIT	700	25	700	250
PROPERTY TAXES	745,478	745,478	813,663	822,171
STATE AID - CL 2 & 3 ROADS	110,000	122,245	120,000	100,000
OVERLOAD PERMITS	250	510	250	500
FEMA REVENUE	-	4,712	-	-
INTEREST INCOME	-	12,856	-	10,000
TOTAL HIGHWAY REVENUE	856,428	885,826	934,613	932,921

HIGHWAY FUND EXPENSE

GENERAL	140,915	167,124	162,285	180,907
CLASS II MAINTANENCE	32,000	24,147	131,500	192,900
CLASS III MAINTENANCE	341,291	229,866	275,300	149,000
WINTER MAINTENANCE	175,750	217,097	181,000	204,000
BRIDGES AND GUARDRAILS	14,530	24,815	42,900	68,587
SPECIAL PROJECTS	12,298	25,903	6,000	26,000
DEBT SERVICE	139,644	139,644	135,628	131,527
TOTAL HIGHWAY FUND EXPENSES	856,428	828,596	934,613	952,921

MACLURE LIBRARY

Family Programs

Family Fun Nights – The Pittsford Recreation Dept. & Maclure Library are teaming up again to offer two more Family Fun Nights during the winter months.

Friday, February 6, 2009 at 6:30 – 8:00 p.m. – *Lost in Space*

Friday, March 6, 2009 at 6:30 - 8:00 p.m. - *Circus Comes to Town*

*Programs are held at the Vermont Police Academy. Activities are intended for children in 3rd grade and younger. Older siblings are invited to attend, but we will ask them to help us with the activities and crafts.



Volunteer opportunities

Library volunteers play an important role as partners in the Library's mission of linking people with information and each other. The stock market losses that have recently hit global markets have taken our carefully stewarded library endowment along for the ride. Historically, as the economy falters and stagnates, public libraries actually see an increase in regular use. Recent cuts in our endowment revenue have made volunteers even more critical in providing services. By sharing your time and talent with us, you can make a big difference in the quality of library service in your community.

Book deliveries to daycare centers – Twice a month, deliver a bag of picture books to five participating daycares. Estimated 4 hours per month.

Book deliveries to Village Manor – Once a month, deliver large print books to a satellite library at Village Manor. Estimated 1 hour per month

Manage our Page to Stage Theater Group - An adult or responsible teen to lead a theater group at the library. Estimated 2 hours per week.

Board of Trustees – We are looking for people with a strong sense of community, a love for our community library, and who can make a regular commitment of time. Estimated 4 hours a month.

Anyone interested in becoming a library volunteer should contact Bonnie Stewart at 483-2972 or email maclurelibrary@comcast.net for more information.

Listen up Vermont

Remember, you now have access to the Green Mountain Library Consortium which allows free downloadable audio books 24/7, anytime, anywhere! Residents can access a diverse collection of audio titles spanning fiction and non-fiction from foreign language to mysteries. To view the collection, visit www.listenupvermont.org. You will need to contact the library for a password, but other than that, it's easy! Books can be downloaded to a computer from home or the library and then transferred to supported portable devices, such as MP3 players, and many titles can be burned to CD. Call 483-2972 for more information and your password.

Vermont Online Library

Our community can access the Vermont Online Library (VOL), brought to you in part by the Vermont Department of Libraries. The VOL is a one-stop source for news and periodical articles on a wide range of topics: business, current events, economics, education, health care, literature, art and science with millions of full-text articles, many with images. These resources are available over the Web to you from your home or office, as well as our library. For access from your home or office, please call and speak to one of the librarians at 483-2972 for your remote access password.

Heritage Quest Online

Call for your password to visit this resource for census data, family records and local histories. This collection assembles every extant U.S. federal census, banking and military records, genealogies, local histories, primary source materials, and genealogical and local history serials.

Be the first to hear of upcoming programs and library news!

If you are interested in e-mail notification of library events, please call 483-2972 to be added to our list.

We are always interested in hearing about new authors, so please don't hesitate to share your great reads!

ORGANIZATION OF A JUNIOR GRANGE

Marble Valley Grange of Pittsford is organizing a Junior Grange. We are looking for girls and boys between the ages of 5 to 14. If you are interested in having fun, learning and making friends, you will enjoy belonging to Junior Grange. Some activities include programs for fun and learning, contests, merit badge program, community service projects, crafts and camp.

For more information, contact Marsha Johnson at 775-7212.

OTTER VALLEY COMMUNITY TALENT SHOW

Presented by the Friends of Otter Valley Music

Calling all musicians, comics, singers*, readers, actors or those with unusual talents or tricks up their sleeves... Start thinking of ways to share your talents with the OV community. All ages welcome! Registration forms are available at Lothrop School. Registration deadline is Feb. 20, 2009. Rehearsal dates are March 9 & 10, 2009. Call Jim at 483-9395 for more information.

Just want to attend? Join us for the show on March 20, 2009 (rain date – April 3).

*Karaoke performers will be limited to elementary students only.



Pittsford Senior Group Luncheon Menu 2009

<u>Luncheon Date:</u>	<u>MENU:</u>	<u>MUST RSVP</u>
February 26 th	Lasagna, Garlic Bread & Brownies	Feb. 17 th
March 26 th	Meatloaf w/ Twice-Baked Potatoes, Pie	March 17 th
April 23 rd	Roast Pork, Yams & Pumpkin Citrus Bars	April 14 th
May 28 th	Chicken & Biscuits & Chocolate Cake	May 19 th
June 25 th	Meatloaf & Twice Baked Potatoes	June 16 th
July 23 rd	BBQ (Chicken, Hamburgers, Hot Dogs), Baked Beans, Cole Slaw & Tapioca w/fruit	July 14 th



Suggested donation of \$4.50 for 60 and up. Must pay \$6.00 if under age 60.

Reservations are Necessary! All luncheons are on Thursdays at 1:00PM at the Vermont Police Academy in Pittsford. RSVPs & questions contact Randy Adams 483-6500 ext 17 or Rsadams11@myfairpoint.net

PITTSFORD SENIORS

Senior citizens of Pittsford have organized a senior group. Pittsford Seniors meet at the Maclure Library on the 2nd Friday of each month at 10:00 am. All seniors in the Pittsford area are invited and encouraged to attend. Come and bring your ideas! Any questions call Randy Adams at the Town Offices 483-6500 ext.17 or email him at Rsadams11@myfairpoint.net.

AARP SAFE DRIVER COURSE

The Pittsford Recreation Department will be sponsoring the AARP Safe Driver Course (formerly "55-Alive"). This 4-hour course is open to all drivers 50 years old and older. The curriculum addresses the normal physical changes brought on by the aging process, how these changes can affect driving ability and behavior & then offers ways to compensate for those changes. There are no tests and no grades.

WHEN: Thurs., June 4

TIME: 1:00 – 5:00 pm

WHERE: Pittsford Town Offices

FEE: \$10 **Pre-registration is REQUIRED for this course. Contact Randy Adams 483-6500 Ext. 17**



PITTSFORD HISTORICAL SOCIETY

www.pittsfordhistorical.com

Since 1960, Society volunteers have preserved, protected, and exhibited hundreds of unique objects that illustrate Pittsford's history. Items include photographs, maps, land and genealogical records, letters and diaries, films and oral history recordings, textiles, tools, and other Pittsford residents' personal possessions. Now in our 48th year, our membership totals 160 people from all over the U.S.

We are always looking for older photos from folks and now, because of generous donations, we have a new Compaq computer with a printer/scanner, so we can scan paper items and then give them back when necessary. Anyone with pictures or information about people/buildings/etc. that would be willing to share with the Society and/or our newsletter, please call Ellen Garneau at 483-4330.

On May 3, 2009, our program will feature Don Thompson, a costumed historical interpreter of Samuel de Champlain. Our meetings and programs are open to anyone interested in Pittsford history.

Officers and Trustees serving in 2009 are President Robert Welch; Vice-President Ellen Garneau; Treasurer Barbara Poljacik; Recording Secretary Rebecca Davenport; Corresponding Secretary Jane Welch. Trustees are Ernest Clerihew, Melanie Clerihew, Edward Keith Sr., and Immediate Past President is Peggy Armitage.

Museum hours are 9-4 on Tuesdays from April to November, and 1-4 on Sundays in July through mid-October. With the recent loss of several longtime museum volunteers, we urge you to call Curator Anne Pelkey 483-6178 to volunteer to assist her with the care and cataloging of our collections or you could help show visitors around the museum at 483-2040.

The Pittsford Fire Department would like to Thank the entire Pittsford community for coming out to help with and support the 28th Haunted House in October 2008. Without the countless volunteers and organizations, this annual fund raising for the Pittsford Fire Department would not be possible. Also Thank you for supporting the Pittsford Santa Fund.

PITTSFORD RECREATION DEPARTMENT EVENTS

NEW ROCK CLIMBING OPPORTUNITY

The Recreation Department has teamed up with the Green Mountain Rock Climbing Center in Rutland to offer a climbing program that will teach kids the basic fundamentals of this life-long sport. They will learn the proper techniques it takes to be a safe and reliable climber. These introduction classes will help individuals obtain the skills they'll need to move up in levels. There are five levels in the Green Mountain Rock Climbing program. At this time, we are offering Intro. & Level 1 classes. (NO transportation for this particular program. Participants are responsible for getting to & from classes on their own.)

DATES: Mondays, March 9 – 30, 2009

TIME: 4:00-5:00pm Intro. To Climbing
5:00-6:00pm Level 1 Climbing

WHERE: Green Mtn. Rock Climbing Ctr.

FEE: \$30.00



DEADLINE TO REGISTER FOR THIS PROGRAM IS MONDAY,

FEB. 23, 2009. Pre-registration is required! To sign up please call the Recreation Department, 483-6500 ext. 17.

SAFE SITTER BABYSITTING COURSE

This interactive program is for 11-13 year old students interested in becoming a "Safe Sitter" babysitter. Participants will learn about child care essentials, injury prevention & management and how to care for choking kids.

REGISTER EARLY MAX. OF 8 STUDENTS ONLY!!

DATES: Mondays, March 2 – April 6, 2009

TIME: 3:00 – 5:00 pm (right after school)

WHERE: Lothrop Elementary School

FEE: \$40.00



CARDIO-KICKBOXING & AEROBIC WORKOUT

This one hour workout incorporates aerobic conditioning, strength & leg training and abdominal work. The cardio-kickboxing portion is a dynamic, low/high impact aerobic workout combining boxing techniques that strengthen the upper and lower body, with punches, jabs, and kicks.

WHEN: Every Tuesday evening, beginning Feb. 3, 2009

WHERE: Lothrop Gym **TIME:** 5:30 – 6:30 pm

FEE: \$6 per class (pay as you go) or \$20 for 4 weeks

INSTRUCTOR: Joani Imperato

BRING: A mat or towel to lay on and wear comfortable clothes New sessions begin each month!

(Based on interest, program will run through May!)



PITTSFORD DAY COMMITTEE

The Pittsford Recreation Department and the Pittsford Day Committee are currently looking for volunteers to join the Pittsford Day Committee. Starting in January, the Committee meets once or twice a month usually from an hour to an hour and a half each meeting up until the event. The Committee is in charge of planning the day's activities, scheduling entertainment, etc...

Please contact Recreation Director, Randy Adams at 483-6500 ext. 17 or Rsdams11@myfairpoint.net to volunteer. Your help will be appreciated. Thank you.



YOUTH BASEBALL/SOFTBALL REGISTRATION

Registration for any boy or girl who is interested in playing T-Ball, Mighty Mites, Minors and Majors Little League, or Girls Softball this spring can be done with the Recreation Director at the Pittsford Municipal Offices Monday – Friday beginning March 2nd. Registration forms will be ready and sent home through Lothrop Elementary School by the end of February.



**The last day to register is
March 27, 2009!**

TEEN NIGHTS (GRADES 7-10)

Teen Nights are a great way for young people in the Pittsford & Brandon communities to get together in a fun and safe environment. Each "Teen Night" event is chaperoned by parents & volunteers. Fee: \$3 per person

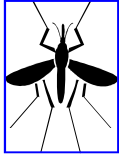
February 13 Valentine Teen Dance

April 24 Spring Fling Teen Dance

7-10 PM Vermont Police Academy

In conjunction with the Brandon Rec. Dept.





MOSQUITO DISTRICT AND COSTS

As the Town's residents and political leaders contemplate the issue of mosquito abatement, a refresher course is in order.

While the Town won a promise from the State to address any mosquito problem arising from the Pomainville land transfer to permanent wetlands, the language of that written promise appears quite vague and non-committal.

The Town Manager has spoken to Dr. Ben Lawton, a Brandon dentist who got involved in mosquito abatement 20 years ago when his wife fell ill due to a mosquito bite. He leads the Brandon, Leicester, Goshen, Salisbury Mosquito District, which has been in existence for 20 years. Dr. Lawton explains that State funding to his district comes in the form of aerial spraying of non-toxic larvacide. The district's member towns each provide money, personnel and equipment for the other facet of the "comprehensive approach" taken—ground application of adulticide. This consists of drivers/applicators driving pick-up trucks through district towns with sprayers in the beds.

If Pittsford wishes to make the most of its resources by joining an existing mosquito district, the Brandon district is the logical choice. The Brandon district has quoted the following figures to Pittsford: A one-time "buy in" cost of \$48,000, which could be paid over two or three years; an initial investment of \$25,000 or so to purchase two used pickups and sprayers; and an annual contribution of approximately \$18,000.

The district would have to hire additional licensed drivers/applicators which would have to be recruited from among Pittsford residents and who would be willing to serve on-call (much like plow drivers), at an hourly wage of \$10 to \$12. One or two Town residents would have to commit to join the district's governing board and attend regular meetings.

[The Brandon district has suggested that a Town decision to join might not come soon enough to justify abatement efforts until the 2010 season.]

*The issue of funding mosquito abatement efforts will be discussed/debated at Town Meeting, March 2, 2009, as an article of the Warning relates to the issue.

REMINDERS: Unheated basements & mobile homes need to have water meters insulated to prevent freezing pipes. This is the property owner's responsibility. Please do not park on sidewalks as the Town is unable to remove snow if they are blocked. Do not plow snow near fire hydrants.



WATER & SEWER UTILITY NEWS

WATER SYSTEM UPGRADES

Over the last several months, Otter Creek Engineering has performed a comprehensive study of the Pittsford and Florence water systems stretching from our springs in Chittenden to fire hydrants in Florence. Town staff helped Mark Youngstrom of Otter Creek Engineering understand the history of the system's construction and the periodic upgrades over the past century. The result is an exhaustive report outlining that history, an analysis of the two systems, State requirements, fire fighting needs, recommendations for upgrades to the system and alternative financing plans.

At its meeting of November 18, 2008, Pittsford's Water & Sewer Commission voted to proceed with design engineering in support of Otter Creek's recommendations. This work will help Pittsford become "ready" to seek/accept low interest loans and/or grant funding from the State and federal governments on short notice for any or all of the numerous projects recommended by Otter Creek which, if fully implemented, would cost approximately \$4,430,000.

The recommended projects include (a) laying new, larger diameter mains to better deliver increased pressure and fire flows to customers in many areas of Town, (b) connecting the Pittsford and Florence systems to allow both systems to use Pittsford's water storage tanks and Florence's high capacity well, providing needed redundancy, and (c) installing new, reliable water meters throughout the systems to better account for the water delivered to customers. These improvements are mandated by the State and necessary for the Town to assure safe and reliable water service. There are no "frills" associated with these improvements and only those improvements considered to be essential are being considered.

In order to become eligible for State funding, Pittsford and Florence customers will have to begin paying rates commensurate with the average cost of municipal water in Vermont. Like many communities, Pittsford and Florence need to address the issue of aging infrastructure. Safe and reliable drinking water and fire protection is certainly one of the most essential things we provide our citizens. Given the potential increased funding that may be available, the Commission feels it is the best time to move ahead with these very needed improvements.

The Water & Sewer Commission will continue to work with Otter Creek Engineering to plan and to identify funding sources most advantageous to the Town. As this project develops, the Commission will provide updated and comprehensive information in the form of newsletters and public meetings. There will be many opportunities to ask questions and get clear answers. It is still very early in the process, but we felt it was important to inform the water users and citizens from the very beginning.

Anyone wishing to review the Study by Otter Creek should contact the Town Manager.

"BE KIND TO YOUR SEWER SYSTEM..."

Due to the recent discovery of medication vials and syringes in the Town's wastewater treatment facilities, the Town would like to take this opportunity to stress the importance of using the sewer system appropriately. Obviously, the flushing of vials and syringes (and any other foreign objects, for that matter) is not an appropriate use of the system and can create blockages which undermine the efficient performance of the system. Please take steps to insure that such objects are properly disposed of.

Thank you very much for your time and attention.

PITTSFORD FOOD SHELF

Upcoming Events: March 1 – April 30, 2009, The Feinstein Million Dollar Food Challenge will be in full swing again this year. Be watching your mail for more information. But let's all get involved to help us meet our goal of \$25,000. Challenge your neighbor, your family and friends, how about the church group or maybe school against school, daycare against day care, town against town. The sky is the limit. Bottom line – we need to raise \$\$ and non-perishable food items for our challenge. Based on what we collect, we will get a **PORTION** of Mr Feinstein's million dollars.

Summer Breakfast and Lunch Bag Program... Pittsford Food Shelf will be starting the Summer Breakfast & Lunch Bag Program this summer when school is out. This replaces the free breakfast & lunches which are not available during the summer vacation. Sign your child up at the Pittsford Food Shelf during the month of MARCH 2009, during the hours that the Food Shelf is open. This is for Pittsford school children only.

Policy –Residents of Pittsford, Proctor & Florence can use the Food Shelf one time a month. You must bring in an utility bill for verification. Reverification is done every 6 months. Please note the Food Shelf is just like a grocery store with the exception no cash register.

501c3 – We are proud to announce that the Pittsford Food Shelf is no longer under the Pittsford Congregational Church. We now have our own non-profit status. We even have a Board of Directors and are as follows : Director – Robin Rowe, Asst Director – Jane Welch, Secretary -Jeffry Taylor, Esq and Treasurer – Dan Shea. If your employer matches donations you might consider the Pittsford Food Shelf. Thank you to the Pittsford Congregational Church for helping us with the funding to become our own non-profit.

THANK YOU – I would like to Thank all of you for your support when we did our annual Stuff-A-Bus and your continued support as the year begins. When Rutland has their Stuff-A-Bus or Stuff the Paramount etc Pittsford does **NOT** receive any of the proceeds, that is why you will see our Stuff-A-Bus become an annual event as well as other fund raisers throughout the year. Again THANK YOU for your generosity.

RSV – This year we will be working with RSV as a drop off point for any fabrics, yarns, craft material etc as well as GOOD used dolls & stuffed animals. The RSV (volunteers) will clean up old dolls, make clothes & blankets for them and then the community will benefit with a beautiful assort of Christmas gifts. You can drop off your items either normal Food Shelf hours (Mon 9-11; T 1-3; Th 4-6) or you can drop off inside Keith's Country Store in the yellow box next to our inside entry to the Food Shelf. Need additional information on the Food Shelf – Call Robin at 483-2967

LOTHROP SCHOOL NEWS

Lothrop School and Town Hall has undergone significant physical changes this past year. The cost of these projects is paid for by the Burditt Fund. We are now ADA compliant in both buildings. The elevator in Town Hall is capable of lifting an electric wheelchair, is out of the weather, and does not intrude on the interior of the main floor. The lift in the School building now has access to the basement classrooms. We have also re-designed the main entry for security purposes and created a meeting room in the empty space above the main entry. Most of us using oil for heat have experienced a "price shock". Mr. West has been very successful at controlling our heating costs by purchasing fuel at a cost under \$2.50 per gallon. We do not know how long this lower price will hold. We continue to monitor the physical well being of the land and buildings that comprise "Lothrop School".

This year the terms of Dave Lacy and Pat Murphy are over. I encourage their continued membership but they are unsure if they are able to make the commitment. Board meetings are regularly held the first and third Tuesdays at 6:30 pm in the School library. We also post the meetings at the kiosk, near the Post Office and Town Offices' entry way. Our meetings are open to the public. Odell A. D. Johnston, Sr., Chair

PLANNING COMMISSION

For the past few months the Planning Commission has been busy working with the Rutland Regional Planning Commission on the updating of our Town Plan. It is anticipated that a preliminary draft will be available for distribution prior to scheduling a public meeting to solicit input and comment around the time of Town Meeting. The following is an extract from the introduction to the draft plan:

"The Pittsford Town Plan is a framework and guide for reaching community goals and providing a vision of the Town's future. It also attempts to balance the wide range of competing interests and demands found in the Town, to coordinate the pattern of development, the use of important natural resources and to address both current and long-term needs. The policies and programs were developed to preserve and protect the Town's assets while providing a future vision for Town officials, businesses, and citizens of Pittsford. Also the Plan should be used as a source of local information that can be valuable to citizens, businesses, students, and members of local boards and commissions."

The Planning Commission looks forward to presenting the draft plan for your comments.

Pittsford Town Monthly Meetings held at the Municipal Office
 Pittsford Select Board: 1st and 3rd Wednesday at 6:30PM
 Pittsford Water & Sewer Commission: 3rd Tuesday at 6:30PM
 Pittsford Planning Commission : 4th Thursday at 7:00PM
 PEG TV Channel 21 will be video taping Select Board meetings starting in January, 2009. The schedule for viewing these meetings are: Wed. at 6:30PM; Thurs. at 4:00PM; Fri. at 8:30AM; Sun. at 3:00PM. The meetings can be viewed at www.pegtv.com, then click video on demand.

"Sunshine Village"

Pittsford Town Office
P.O. Box 10
426 Plains Road
Pittsford, VT 05763

Bulk Rate #1

US Postage

PAID

Pittsford, VT 05763

*Deadline for the next Pittsford Newsletter will be
APRIL 10, 2009. Please send Town articles to
Linda Drummond at drummondl@myfairpoint.net.*

**ALL ADDRESS CHANGES, INCLUDING PO BOX CHANGES,
NEED TO BE SENT TO THE TOWN OFFICE AS THE POST
OFFICE DOES NOT GIVE OUT THIS INFORMATION.**



RABIES CLINIC, MARCH 28, 2009

All Pittsford Dog Owners



DOG LICENSES ARE DUE APRIL 1ST

The Town of Pittsford will be holding a **Rabies Clinic** to help you get your dog's vaccine up to date if needed. The **Rabies Clinic** will be held on **Saturday, March 28, 2009** from 10:30 a.m. to Noon at the Town Municipal Office, 426 Plains Road.

If you're not sure whether or not your dog requires a new rabies shot, please give us a call at 483-6500 Ext. 11 or 12. Maria Dunton will be our Veterinarian for the day. The charge for each rabies shot will be \$10 payable to Dr. Dunton. The Town Office will also be registering dogs at this time. The license fees for registration are: \$7 for spayed or neutered dogs; and \$9 for un-spayed or un-neutered dogs.

We look forward to seeing you on March 28th with you dog or dogs!

Dates to Remember Town Clerk/Treas. Office

ANNUAL TOWN MEETING—Monday,
MARCH 2, 2009, LOTHROP SCHOOL GYM 6:30PM

GENERAL ELECTION—Tuesday,
MARCH 3, 2009 POLLS OPEN 10AM—7PM
MUNICIPAL TOWN OFFICE

DOG LICENSE REMINDER

DOGS ARE REQUIRED TO BE LICENSED EACH YEAR WITH THE TOWN BY **APRIL 1, 2009**. A RABIES CERTIFICATE IS REQUIRED. IF YOU HAVEN'T ALREADY REGISTERED YOUR DOG, PLEASE STOP BY THE TOWN OFFICE BEFORE APRIL 1, 2009.

QUESTIONS CALL 802-483-6500 EXT. 11, 12, OR 13

VISIT OUR TOWN WEBSITE!

www.town.pittsford.vt.us/